



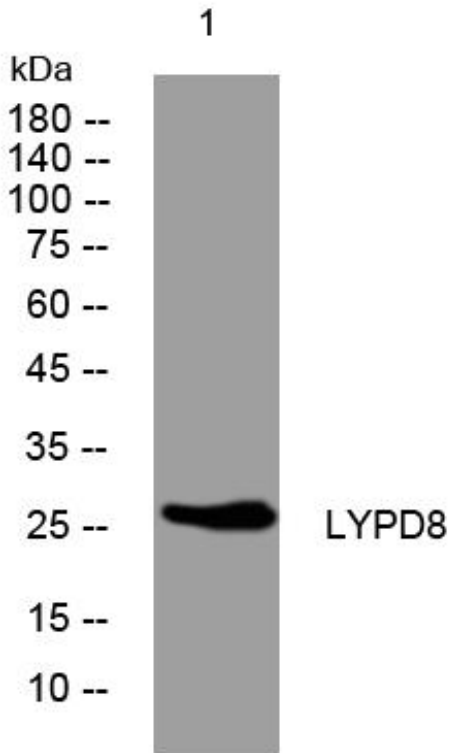
LYPD8 mouse mAb

Catalog No	BYmab-08428
Isotype	IgG
Reactivity	Human; Mouse
Applications	WB
Gene Name	LYPD8 UNQ511/PRO1026
Protein Name	LYPD8
Immunogen	Synthesized peptide derived from human LYPD8 AA range: 42-92
Specificity	This antibody detects endogenous levels of LYPD8 at Human/Mouse
Formulation	Liquid in PBS containing 50% glycerol, 0.5% BSA and 0.02% sodium azide.
Source	Monoclonal, Mouse,IgG
Purification	The antibody was affinity-purified from mouse antiserum by affinity-chromatography using epitope-specific immunogen.
Dilution	WB 1:500-2000
Concentration	1 mg/ml
Purity	≥90%
Storage Stability	-20°C/1 year
Synonyms	
Observed Band	
Cell Pathway	Cell membrane ; Lipid-anchor, GPI-anchor . Secreted . Secreted into the lumen of the colon following cleavage of the GPI-anchor. .
Tissue Specificity	Expressed in the large intestine. Preferentially expressed on the epithelial layer exposed to the lumen (at protein level).
Function	similarity:Belongs to the CNF-like-inhibitor family.,
Background	
matters needing attention	Avoid repeated freezing and thawing!
Usage suggestions	This product can be used in immunological reaction related experiments. For more information, please consult technical personnel.

Nanjing BYabscience technology Co.,Ltd



Products Images



Western Blot analysis of various cells using LYPD8 mouse mAb