



# KTAP2 mouse mAb

<b>Catalog No</b>	BYmab-08409
<b>Isotype</b>	IgG
<b>Reactivity</b>	Human; Mouse;Rat
<b>Applications</b>	WB
<b>Gene Name</b>	KRTCAP2 KCP2
<b>Protein Name</b>	KTAP2
<b>Immunogen</b>	Synthesized peptide derived from human KTAP2 AA range: 39-89
<b>Specificity</b>	This antibody detects endogenous levels of KTAP2 at Human/Mouse/Rat
<b>Formulation</b>	Liquid in PBS containing 50% glycerol, 0.5% BSA and 0.02% sodium azide.
<b>Source</b>	Monoclonal, Mouse,IgG
<b>Purification</b>	The antibody was affinity-purified from mouse antiserum by affinity-chromatography using epitope-specific immunogen.
<b>Dilution</b>	WB 1:500-2000
<b>Concentration</b>	1 mg/ml
<b>Purity</b>	≥90%
<b>Storage Stability</b>	-20°C/1 year
<b>Synonyms</b>	
<b>Observed Band</b>	
<b>Cell Pathway</b>	Endoplasmic reticulum . Endoplasmic reticulum membrane ; Multi-pass membrane protein .
<b>Tissue Specificity</b>	Expressed in skin, heart, placental, liver, skeletal muscle, kidney, pancreas, keratinocytes and dermal fibroblasts.
<b>Function</b>	caution:It is uncertain whether Met-1 or Met-27 is the initiator.,similarity:Belongs to the KRTCAP2 family.,subunit:Component of the oligosaccharyltransferase (OST) complex. OST seems to exist in different forms which contain at least RPN1, RPN2, OST48, DAD1, OSTC, KRTCAP2 and either STT3A or STT3B. OST can form stable complexes with the Sec61 complex or with both the Sec61 and TRAP complexes.,tissue specificity:Expressed in skin, heart, placental, liver, skeletal muscle, kidney, pancreas, keratinocytes and dermal fibroblasts.,
<b>Background</b>	

**Nanjing BYabscience technology Co.,Ltd**

网址: [www.njbybio.com](http://www.njbybio.com)

官方热线: 025-5229-8998

监督电话: 15950492658



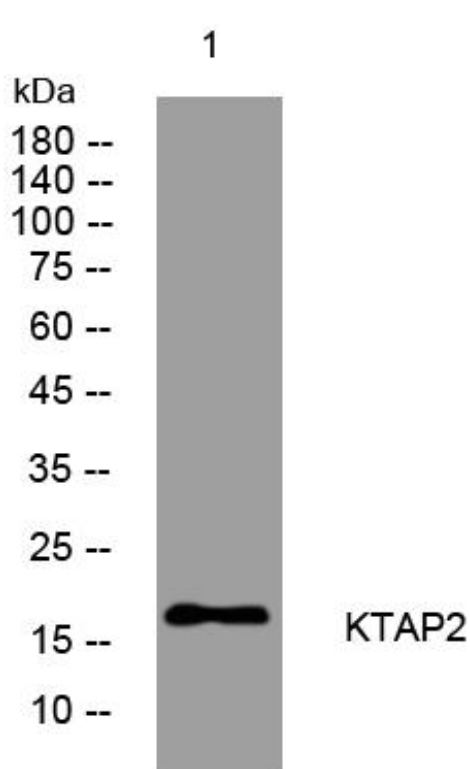
**matters needing attention**

Avoid repeated freezing and thawing!

**Usage suggestions**

This product can be used in immunological reaction related experiments. For more information, please consult technical personnel.

## Products Images



Western Blot analysis of various cells using KTAP2 mouse mAb