



CL16A mouse mAb

Catalog No	BYmab-08319
Isotype	IgG
Reactivity	Human; Mouse
Applications	WB
Gene Name	CLEC16A KIAA0350
Protein Name	CL16A
Immunogen	Synthesized peptide derived from human CL16A AA range: 129-179
Specificity	This antibody detects endogenous levels of CL16A at Human/Mouse
Formulation	Liquid in PBS containing 50% glycerol, 0.5% BSA and 0.02% sodium azide.
Source	Monoclonal, Mouse,IgG
Purification	The antibody was affinity-purified from mouse antiserum by affinity-chromatography using epitope-specific immunogen.
Dilution	WB 1:500-2000
Concentration	1 mg/ml
Purity	≥90%
Storage Stability	-20°C/1 year
Synonyms	
Observed Band	
Cell Pathway	Endosome membrane ; Peripheral membrane protein . Lysosome membrane ; Peripheral membrane protein . Associates with the endolysosome membrane. .
Tissue Specificity	Almost exclusively expressed in immune cells, including dendritic cells, B-lymphocytes and natural killer cells.
Function	disease:Defects in CLEC16A might be a cause of insulin-dependent diabetes mellitus (IDDM) [MIM:222100].,similarity:Belongs to the CLEC16A/gop-1 family.,tissue specificity:Almost exclusively expressed in immune cells, including dendritic cells, B lymphocytes and natural killer cells.,
Background	This gene encodes a member of the C-type lectin domain containing family. Single nucleotide polymorphisms in introns of this gene have been associated with diabetes mellitus, multiple sclerosis and rheumatoid arthritis. Multiple transcript variants encoding different isoforms have been found for this gene. [provided by RefSeq, Aug 2011],

Nanjing BYabscience technology Co.,Ltd

网址: www.njbybio.com

官方热线: 025-5229-8998

监督电话: 15950492658



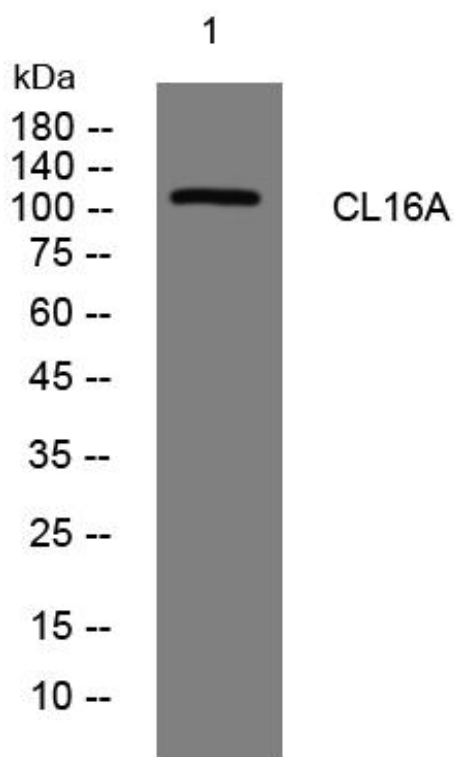
matters needing attention

Avoid repeated freezing and thawing!

Usage suggestions

This product can be used in immunological reaction related experiments. For more information, please consult technical personnel.

Products Images



Western Blot analysis of various cells using CL16A mouse mAb

Nanjing BYabs science technology Co.,Ltd

网址: www.njbybio.com

官方热线: 025-5229-8998

监督电话: 15950492658