



ARMC1 mouse mAb

| | |
|---------------------------|--|
| Catalog No | BYmab-08272 |
| Isotype | IgG |
| Reactivity | Human; Mouse |
| Applications | WB |
| Gene Name | ARMC1 ARCP |
| Protein Name | ARMC1 |
| Immunogen | Synthesized peptide derived from human ARMC1 AA range: 203-253 |
| Specificity | This antibody detects endogenous levels of ARMC1 at Human/Mouse |
| Formulation | Liquid in PBS containing 50% glycerol, 0.5% BSA and 0.02% sodium azide. |
| Source | Monoclonal, Mouse,IgG |
| Purification | The antibody was affinity-purified from mouse antiserum by affinity-chromatography using epitope-specific immunogen. |
| Dilution | WB 1:500-2000 |
| Concentration | 1 mg/ml |
| Purity | ≥90% |
| Storage Stability | -20°C/1 year |
| Synonyms | |
| Observed Band | |
| Cell Pathway | Cytoplasm . Mitochondrion . Mitochondrion outer membrane . Associates with the outer mitochondrion membrane, most likely through its C-terminus (PubMed:31644573). Not integrated into the mitochondrial outer membrane (PubMed:31644573). . |
| Tissue Specificity | |
| Function | similarity:Contains 1 ARM repeat., |
| Background | |
| matters needing attention | Avoid repeated freezing and thawing! |

Nanjing BYabscience technology Co.,Ltd

网址: www.njbybio.com

官方热线: 025-5229-8998

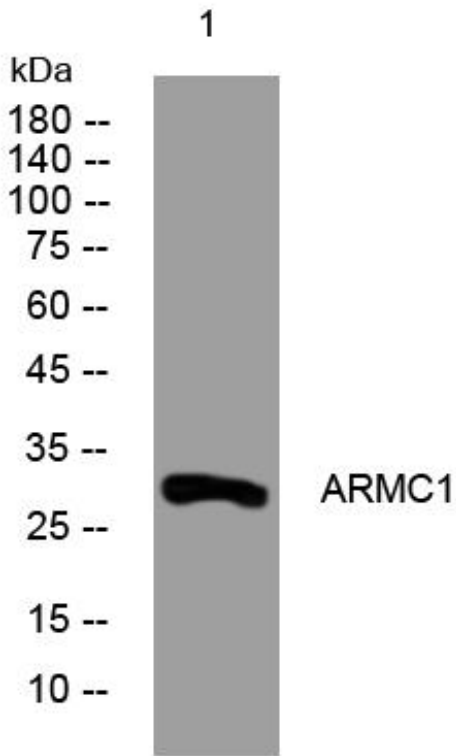
监督电话: 15950492658



Usage suggestions

This product can be used in immunological reaction related experiments. For more information, please consult technical personnel.

Products Images



Western Blot analysis of various cells using ARMC1 mouse mAb