



# DCBD2 mouse mAb

Catalog No	BYmab-08244
Isotype	IgG
Reactivity	Human; Mouse;Rat
Applications	WB
Gene Name	DCBLD2 CLCP1 ESDN
Protein Name	DCBD2
Immunogen	Synthesized peptide derived from human DCBD2 AA range: 142-192
Specificity	This antibody detects endogenous levels of DCBD2 at Human/Mouse/Rat
Formulation	Liquid in PBS containing 50% glycerol, 0.5% BSA and 0.359% sodium azide.
Source	Monoclonal, Mouse,IgG
Purification	The antibody was affinity-purified from mouse antiserum by affinity-chromatography using epitope-specific immunogen.
Dilution	WB 1:500-2000
Concentration	1 mg/ml
Purity	≥90%
Storage Stability	-20°C/1 year
Synonyms	Discoidin, CUB and LCCL domain-containing protein 2 (CUB, LCCL and coagulation factor V/VIII-homology domains protein 1) (Endothelial and smooth muscle cell-derived neuropilin-like protein)
Observed Band	85kD
Cell Pathway	Membrane ; Single-pass type I membrane protein .
Tissue Specificity	Highly expressed in testis, heart, skeletal muscle and also in cultured vascular smooth muscle cells.
Function	induction:Increased in lung cancers during the process of tumor progression.,similarity:Contains 1 CUB domain.,similarity:Contains 1 F5/8 type C domain.,similarity:Contains 1 LCCL domain.,tissue specificity:Highly expressed in testis, heart, skeletal muscle and also in cultured vascular smooth muscle cells.,
Background	

Nanjing BYabscience technology Co.,Ltd

网址: [www.njbybio.com](http://www.njbybio.com)

官方热线: 025-5229-8998

监督电话: 15950492658



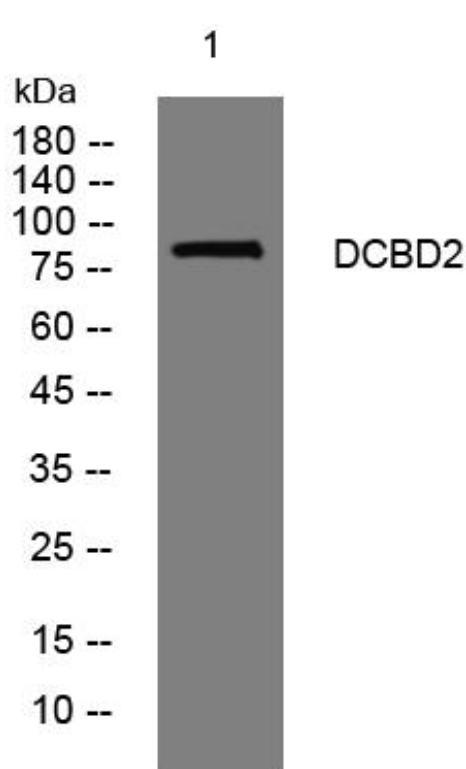
**matters needing attention**

Avoid repeated freezing and thawing!

**Usage suggestions**

This product can be used in immunological reaction related experiments. For more information, please consult technical personnel.

## Products Images



Western Blot analysis of various cells using DCBD2 mouse mAb

Nanjing BYabs science technology Co.,Ltd

网址: [www.njbybio.com](http://www.njbybio.com)

官方热线: 025-5229-8998

监督电话: 15950492658