



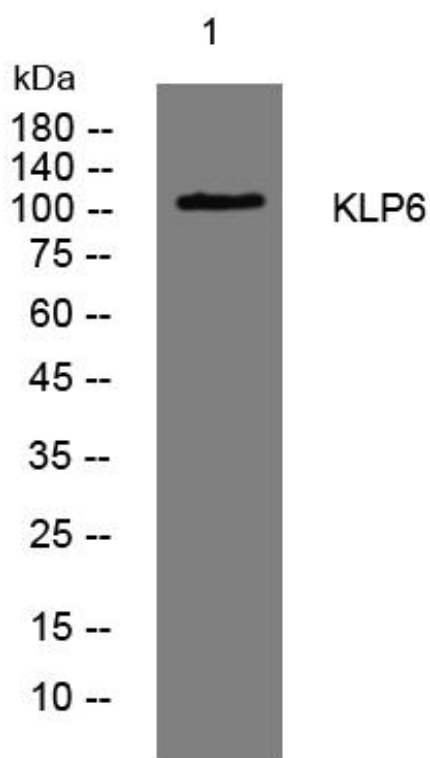
KLP6 mouse mAb

Catalog No	BYmab-08160
Isotype	IgG
Reactivity	Human; Mouse;Rat
Applications	WB
Gene Name	KLP6
Protein Name	KLP6
Immunogen	Synthesized peptide derived from human KLP6 AA range: 434-484
Specificity	This antibody detects endogenous levels of KLP6 at Human/Mouse/Rat
Formulation	Liquid in PBS containing 50% glycerol, 0.5% BSA and 0.275% sodium azide.
Source	Monoclonal, Mouse,IgG
Purification	The antibody was affinity-purified from mouse antiserum by affinity-chromatography using epitope-specific immunogen.
Dilution	WB 1:500-2000
Concentration	1 mg/ml
Purity	≥90%
Storage Stability	-20°C/1 year
Synonyms	Kinesin-like protein KLP6 (Kinesin-like protein 6)
Observed Band	105kD
Cell Pathway	Mitochondrion membrane ; Peripheral membrane protein .
Tissue Specificity	
Function	
Background	
matters needing attention	Avoid repeated freezing and thawing!
Usage suggestions	This product can be used in immunological reaction related experiments. For more information, please consult technical personnel.

Nanjing BYabscience technology Co.,Ltd



Products Images



Western Blot analysis of various cells using KLP6 mouse mAb