



MSTO1 mouse mAb

Catalog No	BYmab-08070
Isotype	IgG
Reactivity	Human; Mouse
Applications	WB
Gene Name	MSTO1 LST005 SLTP005
Protein Name	MSTO1
Immunogen	Synthesized peptide derived from human MSTO1 AA range: 349-399
Specificity	This antibody detects endogenous levels of MSTO1 at Human/Mouse
Formulation	Liquid in PBS containing 50% glycerol, 0.5% BSA and 0.185% sodium azide.
Source	Monoclonal, Mouse,IgG
Purification	The antibody was affinity-purified from mouse antiserum by affinity-chromatography using epitope-specific immunogen.
Dilution	WB 1:500-2000
Concentration	1 mg/ml
Purity	≥90%
Storage Stability	-20°C/1 year
Synonyms	Protein misato homolog 1
Observed Band	65kD
Cell Pathway	Mitochondrion outer membrane . Cytoplasm .
Tissue Specificity	Present in all cell lines tested (at protein level). Widely expressed.
Function	function:Involved in the regulation of mitochondrial distribution and morphology.,similarity:Belongs to the misato family.,tissue specificity:Present in all cell lines tested (at protein level). Widely expressed.,
Background	
matters needing attention	Avoid repeated freezing and thawing!

Nanjing BYabscience technology Co.,Ltd

网址: www.njbybio.com

官方热线: 025-5229-8998

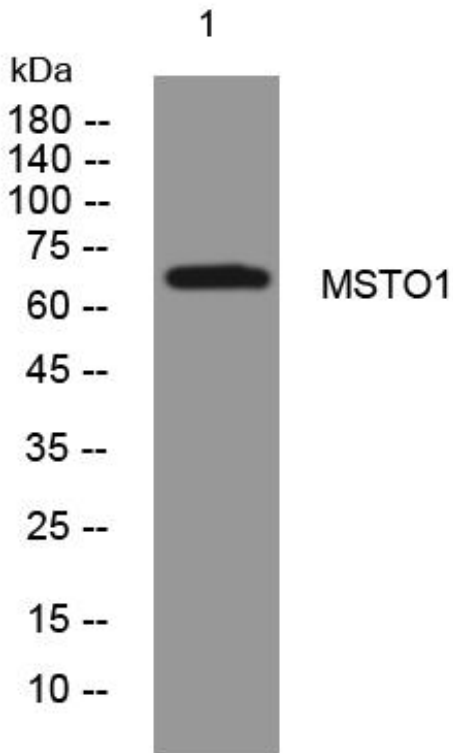
监督电话: 15950492658



Usage suggestions

This product can be used in immunological reaction related experiments. For more information, please consult technical personnel.

Products Images



Western Blot analysis of various cells using MSTO1 mouse mAb

Nanjing BYabscience technology Co.,Ltd

网址: www.njbybio.com

官方热线: 025-5229-8998

监督电话: 15950492658