



# PDLI2 mouse mAb

<b>Catalog No</b>	BYmab-07908
<b>Isotype</b>	IgG
<b>Reactivity</b>	Human; Mouse;Rat
<b>Applications</b>	WB
<b>Gene Name</b>	PDLIM2 PP6345
<b>Protein Name</b>	PDLI2
<b>Immunogen</b>	Synthesized peptide derived from human PDLI2 AA range: 190-240
<b>Specificity</b>	This antibody detects endogenous levels of PDLI2 at Human/Mouse/Rat
<b>Formulation</b>	Liquid in PBS containing 50% glycerol, 0.5% BSA and 0.22% sodium azide.
<b>Source</b>	Monoclonal, Mouse,IgG
<b>Purification</b>	The antibody was affinity-purified from mouse antiserum by affinity-chromatography using epitope-specific immunogen.
<b>Dilution</b>	WB 1:500-2000
<b>Concentration</b>	1 mg/ml
<b>Purity</b>	≥90%
<b>Storage Stability</b>	-20°C/1 year
<b>Synonyms</b>	PDZ and LIM domain protein 2 (PDZ-LIM protein mystique)
<b>Observed Band</b>	38kD
<b>Cell Pathway</b>	Cytoplasm . Nucleus . May be partially nuclear.; [Isoform 1]: Cytoplasm, cytoskeleton. Colocalizes with beta-1 integrin (ITGB1) and alpha-actinin but not with paxillin (PXN).; [Isoform 2]: Cytoplasm, cytoskeleton.; [Isoform 3]: Nucleus.
<b>Tissue Specificity</b>	Epithelium,Hypothalamus,Placenta,Spleen,
<b>Function</b>	function:Probable adapter protein located at the actin cytoskeleton that promotes cell attachment. Necessary for the migratory capacity of epithelial cells. Overexpression enhances cell adhesion to collagen and fibronectin and suppresses anchorage independent growth. May contribute to tumor cell migratory capacity.,similarity:Contains 1 LIM zinc-binding domain.,similarity:Contains 1 PDZ (DHR) domain.,subcellular location:Colocalizes with beta-1 integrin (ITGB1) and alpha-actinin but not with paxillin (PXN).,subcellular location:May be partially nuclear.,subunit:Interacts with alpha-actinins ACTN1 and ACTN4, FLNA and MYH9.,

**Nanjing BYabscience technology Co.,Ltd**



## Background

This gene encodes a member of the ALP subfamily of PDZ-LIM domain proteins. The encoded protein suppresses anchorage-dependent growth and promotes cell migration and adhesion through interactions with the actin cytoskeleton via the PDZ domain. The encoded protein is also a putative tumor suppressor protein, and decreased expression of this gene is associated with several malignancies including breast cancer and adult T-cell leukemia. Alternatively spliced transcript variants encoding multiple isoforms have been observed for this gene. [provided by RefSeq, Oct 2011],

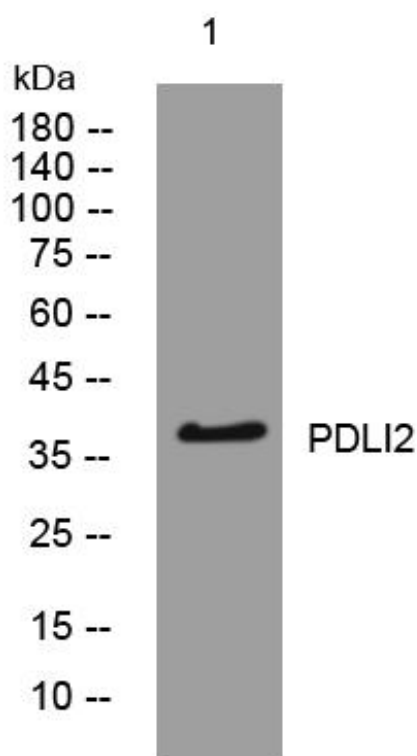
## matters needing attention

Avoid repeated freezing and thawing!

## Usage suggestions

This product can be used in immunological reaction related experiments. For more information, please consult technical personnel.

## Products Images



Western Blot analysis of various cells using PDLI2 mouse mAb