



MTPN Monoclonal Antibody

Catalog No	BYmab-07781
Isotype	IgG
Reactivity	Human;Mouse;Rat
Applications	WB
Gene Name	MTPN
Protein Name	Myotrophin (Protein V-1)
Immunogen	Synthesized peptide derived from part region of human protein AA range: 1-50
Specificity	MTPN Monoclonal Antibody detects endogenous levels of protein.
Formulation	Liquid in PBS containing 50% glycerol, and 0.02% sodium azide.
Source	Monoclonal, Mouse,IgG
Purification	The antibody was affinity-purified from mouse antiserum by affinity-chromatography using epitope-specific immunogen.
Dilution	WB 1:500-2000
Concentration	1 mg/ml
Purity	≥90%
Storage Stability	-20°C/1 year
Synonyms	
Observed Band	12kD
Cell Pathway	Cytoplasm . Nucleus . Cytoplasm, perinuclear region .
Tissue Specificity	Ubiquitous.
Function	function:Potential role in cerebellar morphogenesis. May function in differentiation of cerebellar neurons, particularly of granule cells. Seems to be associated with cardiac hypertrophy.,induction:By IFNA1.,miscellaneous:Elicits IgG antibody response in a subset of polycythemia vera patients and as well in patients with chronic myelogenous leukemia and prostate cancer receiving IFNA1 or other therapy, suggesting that it is broadly immunogenic.,miscellaneous:This protein is produced by a bicistronic gene which also produces the MPD6 protein from a non-overlapping reading frame. MPD6 belongs to a group of cryptic antigens without conventional genomic structure. It is encoded by a cryptic open reading frame located in the 3'-untranslated region of MTPN.,miscellaneous:This protein is produced by a bicistronic gene which also produces the MTPN protein from a non-overlapping reading frame. LU

Nanjing BYabscience technology Co.,Ltd



Background

The transcript produced from this gene is bi-cistronic and can encode both myotrophin and leucine zipper protein 6. The myotrophin protein is associated with cardiac hypertrophy, where it is involved in the conversion of NFkappa B p50-p65 heterodimers to p50-p50 and p65-p65 homodimers. This protein also has a potential function in cerebellar morphogenesis, and it may be involved in the differentiation of cerebellar neurons, particularly of granule cells. A cryptic ORF at the 3' end of this transcript uses a novel internal ribosome entry site and a non-AUG translation initiation codon to produce leucine zipper protein 6, a 6.4 kDa tumor antigen that is associated with myeloproliferative disease. [provided by RefSeq, Jul 2008],

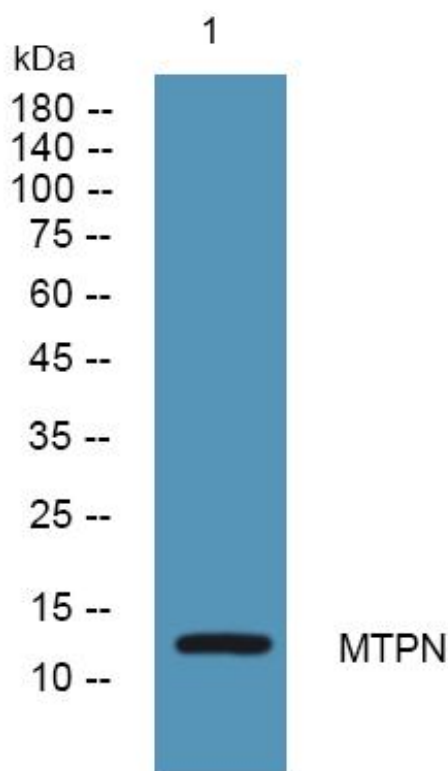
matters needing attention

Avoid repeated freezing and thawing!

Usage suggestions

This product can be used in immunological reaction related experiments. For more information, please consult technical personnel.

Products Images



Western Blot analysis of various cells using MTPN Monoclonal Antibody