



PODO Monoclonal Antibody

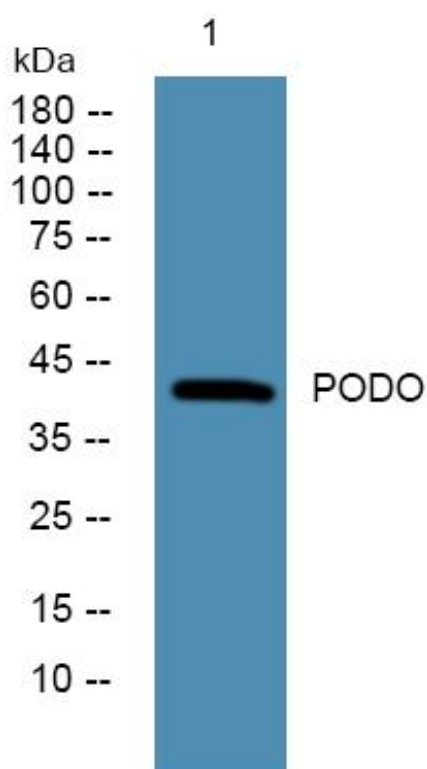
Catalog No	BYmab-07756
Isotype	IgG
Reactivity	Human;Rat;Mouse;
Applications	WB
Gene Name	NPHS2
Protein Name	Podocin
Immunogen	Synthesized peptide derived from part region of human protein
Specificity	PODO Monoclonal Antibody detects endogenous levels of protein.
Formulation	Liquid in PBS containing 50% glycerol, and 0.02% sodium azide.
Source	Monoclonal, Mouse,IgG
Purification	The antibody was affinity-purified from mouse antiserum by affinity-chromatography using epitope-specific immunogen.
Dilution	WB 1:500-2000
Concentration	1 mg/ml
Purity	≥90%
Storage Stability	-20°C/1 year
Synonyms	
Observed Band	42kD
Cell Pathway	[Isoform 1]: Cell membrane ; Peripheral membrane protein .; [Isoform 2]: Endoplasmic reticulum .
Tissue Specificity	Almost exclusively expressed in the podocytes of fetal and mature kidney glomeruli.
Function	disease:Defects in NPHS2 are the cause of autosomal recessive steroid-resistant nephrotic syndrome (SRN) [MIM:600995]. SRN is characterized by onset between three months and five years, resistance to steroid therapy and rapid progression to end-stage renal disease. Focal segmental glomerulosclerosis is present at later stages.,function:Plays a role in the regulation of glomerular permeability, acting probably as a linker between the plasma membrane and the cytoskeleton.,similarity:Belongs to the band 7/mec-2 family.,subunit:Interacts with nephrin/NPHS1 and KIRREL. Interacts directly with CD2AP. Interacts with DDN.,tissue specificity:Almost exclusively expressed in the podocytes of fetal and mature kidney glomeruli.,

Nanjing BYabscience technology Co.,Ltd



Background	This gene encodes a protein that plays a role in the regulation of glomerular permeability. Mutations in this gene cause steroid-resistant nephrotic syndrome. Alternative splicing results in multiple transcript variants. [provided by RefSeq, Jul 2014],
matters needing attention	Avoid repeated freezing and thawing!
Usage suggestions	This product can be used in immunological reaction related experiments. For more information, please consult technical personnel.

Products Images



Western Blot analysis of various cells using PODO Monoclonal Antibody