



# GPR45 Monoclonal Antibody

Catalog No	BYmab-07382
Isotype	IgG
Reactivity	Human;Mouse
Applications	WB
Gene Name	GPR45
Protein Name	Probable G-protein coupled receptor 45 (PSP24-1) (PSP24-alpha)
Immunogen	Synthesized peptide derived from human protein . at AA range: 110-190
Specificity	GPR45 Monoclonal Antibody detects endogenous levels of protein.
Formulation	Liquid in PBS containing 50% glycerol, and 0.02% sodium azide.
Source	Monoclonal, Mouse,IgG
Purification	The antibody was affinity-purified from mouse antiserum by affinity-chromatography using epitope-specific immunogen.
Dilution	WB 1:500-2000
Concentration	1 mg/ml
Purity	≥90%
Storage Stability	-20°C/1 year
Synonyms	
Observed Band	40kD
Cell Pathway	Cell membrane; Multi-pass membrane protein.
Tissue Specificity	Expressed in brain; detected in the basal forebrain, frontal cortex, and caudate, but not in thalamus, hippocampus, or putamen.
Function	function:Orphan receptor. May play a role in brain function.,similarity:Belongs to the G-protein coupled receptor 1 family.,tissue specificity:Expressed in brain; detected in the basal forebrain, frontal cortex, and caudate, but not in thalamus, hippocampus, or putamen.,
Background	This intronless gene encodes a member of the G protein-coupled receptor (GPCR) family. Members of this protein family contain seven putative transmembrane domains and may mediate signaling processes to the interior of the cell via activation of heterotrimeric G proteins. This protein may function in the central nervous system. [provided by RefSeq, Jul 2008],

Nanjing BYabscience technology Co.,Ltd



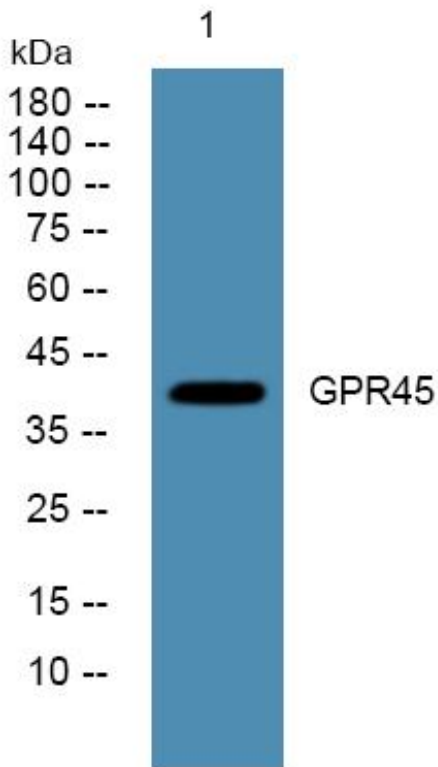
**matters needing attention**

Avoid repeated freezing and thawing!

**Usage suggestions**

This product can be used in immunological reaction related experiments. For more information, please consult technical personnel.

## Products Images



Western Blot analysis of various cells using GPR45 Monoclonal Antibody