



B2MG Monoclonal Antibody

Catalog No	BYmab-07246
Isotype	IgG
Reactivity	Human;Rat;Mouse
Applications	WB
Gene Name	B2M CDABP0092 HDCMA22P
Protein Name	Beta-2-microglobulin [Cleaved into: Beta-2-microglobulin form pl 5.3]
Immunogen	Synthesized peptide derived from human protein . at AA range: 40-120
Specificity	B2MG Monoclonal Antibody detects endogenous levels of protein.
Formulation	Liquid in PBS containing 50% glycerol, and 0.02% sodium azide.
Source	Monoclonal, Mouse,IgG
Purification	The antibody was affinity-purified from mouse antiserum by affinity-chromatography using epitope-specific immunogen.
Dilution	WB 1:500-2000
Concentration	1 mg/ml
Purity	≥90%
Storage Stability	-20°C/1 year
Synonyms	
Observed Band	13kD
Cell Pathway	Secreted . Cell surface . Detected in serum and urine (PubMed:1336137, PubMed:7554280). .; (Microbial infection) In the presence of M.tuberculosis EsxA-EsxB complex decreased amounts of B2M are found on the cell surface (PubMed:25356553). .
Tissue Specificity	Dendritic cell, Eye, Leukemia, Peripheral blood, Skin, Trachea, Urine,
Function	disease:Defects in B2M are the cause of hypercatabolic hypoproteinemia [MIM:241600]. Affected individuals show marked reduction in serum concentrations of immunoglobulin and albumin, probably due to rapid degradation.,function:Beta-2-microglobulin is the beta-chain of major histocompatibility complex class I molecules.,online information:Beta-2-microglobulin entry,PTM:Glycation of Ile-21 is observed in long-term hemodialysis patients.,similarity:Belongs to the beta-2-microglobulin family.,similarity:Contains 1 Ig-like C1-type (immunoglobulin-like) domain.,

Nanjing BYabscience technology Co.,Ltd

网址: www.njbybio.com

官方热线: 025-5229-8998

监督电话: 15950492658



Background

This gene encodes a serum protein found in association with the major histocompatibility complex (MHC) class I heavy chain on the surface of nearly all nucleated cells. The protein has a predominantly beta-pleated sheet structure that can form amyloid fibrils in some pathological conditions. The encoded antimicrobial protein displays antibacterial activity in amniotic fluid. A mutation in this gene has been shown to result in hypercatabolic hypoproteinemia.[provided by RefSeq, Aug 2014],

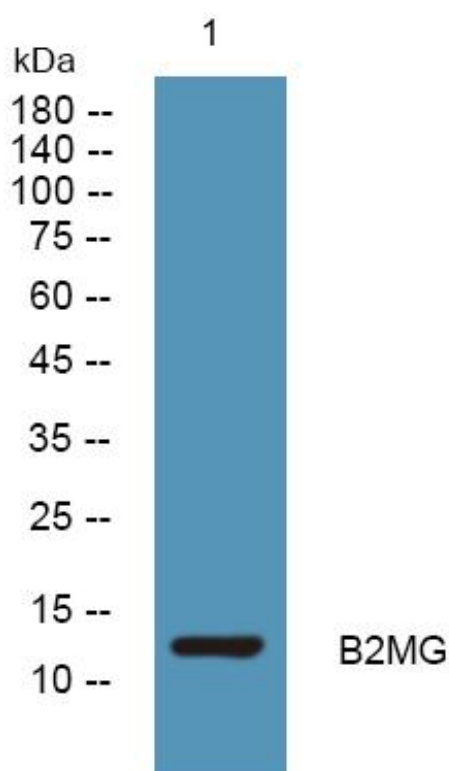
matters needing attention

Avoid repeated freezing and thawing!

Usage suggestions

This product can be used in immunological reaction related experiments. For more information, please consult technical personnel.

Products Images



Western Blot analysis of various cells using B2MG Monoclonal Antibody