



# FHL2 Monoclonal Antibody

Catalog No	BYmab-06936
Isotype	IgG
Reactivity	Human;Rat;Mouse
Applications	WB
Gene Name	FHL2 DRAL SLIM3
Protein Name	Four and a half LIM domains protein 2 (FHL-2) (LIM domain protein DRAL) (Skeletal muscle LIM-protein 3) (SLIM-3)
Immunogen	Synthesized peptide derived from part region of human protein
Specificity	FHL2 Monoclonal Antibody detects endogenous levels of protein.
Formulation	Liquid in PBS containing 50% glycerol, and 0.02% sodium azide.
Source	Monoclonal, Mouse,IgG
Purification	The antibody was affinity-purified from mouse antiserum by affinity-chromatography using epitope-specific immunogen.
Dilution	WB 1:500-2000
Concentration	1 mg/ml
Purity	≥90%
Storage Stability	-20°C/1 year
Synonyms	
Observed Band	30kD
Cell Pathway	Cytoplasm . Nucleus . Cytoplasm, myofibril, sarcomere, Z line .
Tissue Specificity	Expressed in skeletal muscle and heart.
Function	domain:The third LIM zinc-binding mediates interaction with E4F1.,function:May function as a molecular transmitter linking various signaling pathways to transcriptional regulation. Negatively regulates the transcriptional repressor E4F1 and may function in cell growth.,similarity:Contains 1 LIM zinc-binding domain.,similarity:Contains 3 LIM zinc-binding domains.,similarity:Contains 4 LIM zinc-binding domains.,subunit:Interacts with ZNF638 and TTN/titin. Interacts with E4F1.,tissue specificity:Expressed in skeletal muscle and heart.,
Background	This gene encodes a member of the four-and-a-half-LIM-only protein family. Family members contain two highly conserved, tandemly arranged, zinc finger domains with four highly conserved cysteines binding a zinc atom in each zinc finger. This protein is thought to have a role in the assembly of extracellular

Nanjing BYabscience technology Co.,Ltd



membranes. Also, this gene is down-regulated during transformation of normal myoblasts to rhabdomyosarcoma cells and the encoded protein may function as a link between presenilin-2 and an intracellular signaling pathway. Multiple alternatively spliced variants encoding different isoforms have been identified. [provided by RefSeq, Jan 2016],

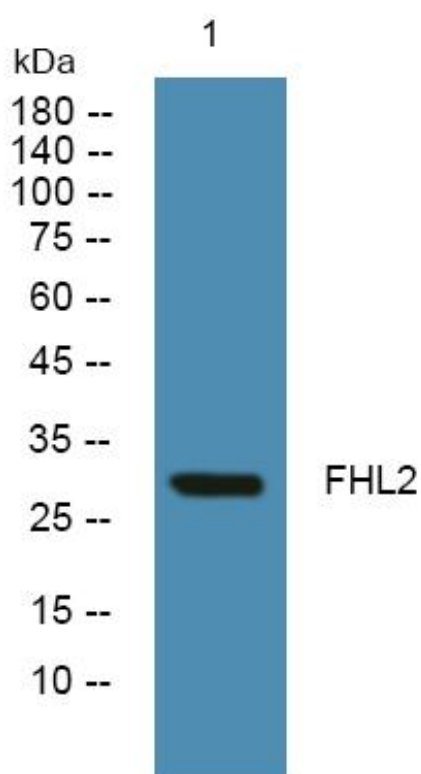
**matters needing attention**

Avoid repeated freezing and thawing!

**Usage suggestions**

This product can be used in immunological reaction related experiments. For more information, please consult technical personnel.

## Products Images



Western Blot analysis of various cells using FHL2 Monoclonal Antibody