



# CDO1 Monoclonal Antibody

Catalog No	BYmab-06867
Isotype	IgG
Reactivity	Human;Mouse;Rat
Applications	WB
Gene Name	CDO1
Protein Name	Cysteine dioxygenase type 1 (EC 1.13.11.20) (Cysteine dioxygenase type I) (CDO) (CDO-I)
Immunogen	Synthesized peptide derived from part region of human protein
Specificity	CDO1 Monoclonal Antibody detects endogenous levels of protein.
Formulation	Liquid in PBS containing 50% glycerol, and 0.02% sodium azide.
Source	Monoclonal, Mouse,IgG
Purification	The antibody was affinity-purified from mouse antiserum by affinity-chromatography using epitope-specific immunogen.
Dilution	WB 1:500-2000
Concentration	1 mg/ml
Purity	≥90%
Storage Stability	-20°C/1 year
Synonyms	
Observed Band	27kD
Cell Pathway	cytosol,
Tissue Specificity	Highly expressed in liver and placenta. Low expression in heart, brain and pancreas. Also detected in hepatoblastoma Hep-G2 cells.
Function	catalytic activity:L-cysteine + O(2) = 3-sulfinoalanine.,cofactor: Binds 1 iron ion per subunit. Zinc to a much lesser extent.,cofactor: IRON; NAD(P)H.,function: Initiates several important metabolic pathways related to pyruvate and several sulfurate compounds including sulfate, hypotaurine and taurine. Critical regulator of cellular cysteine concentrations. Has an important role in maintaining the hepatic concentration of intracellular free cysteine within a proper narrow range.,induction: In hepatoblastoma HepG2 cells, down-regulated by phorbol 12-myristate 13-acetate.,pathway: Organosulfur biosynthesis; taurine biosynthesis; hypotaurine from L-cysteine: step 1/2.,PTM: The thioether cross-link between Cys-93 and Tyr-157 plays a structural role through stabilizing the Fe(2+) ion, and prevents the production of highly damaging free hydroxyl radicals by

Nanjing BYabscience technology Co.,Ltd



holding the oxygen radical via hydroxyl hy

## Background

catalytic activity:L-cysteine + O(2) = 3-sulfinoalanine.,cofactor:binds 1 iron ion per subunit. Zinc to a much lesser extent.,cofactor:IRON; NAD(P)H.,function:Initiates several important metabolic pathways related to pyruvate and several sulfurate compounds including sulfate, hypotaurine and taurine. Critical regulator of cellular cysteine concentrations. Has an important role in maintaining the hepatic concentration of intracellular free cysteine within a proper narrow range.,induction:In hepatoblastoma HepG2 cells, down-regulated by phorbol 12-myristate 13-acetate.,pathway:Organosulfur biosynthesis; taurine biosynthesis; hypotaurine from L-cysteine: step 1/2.,PTM:The thioether cross-link between Cys-93 and Tyr-157 plays a structural role through stabilizing the Fe(2+) ion, and prevents the production of highly damaging free hydroxyl radicals by holding the oxygen radical via hydroxyl hydrogen.,similarity:Belongs to the cysteine dioxygenase family.,subunit:Monomer.,tissue specificity:Highly expressed in liver and placenta. Low expression in heart, brain and pancreas. Also detected in hepatoblastoma HepG2 cells.,

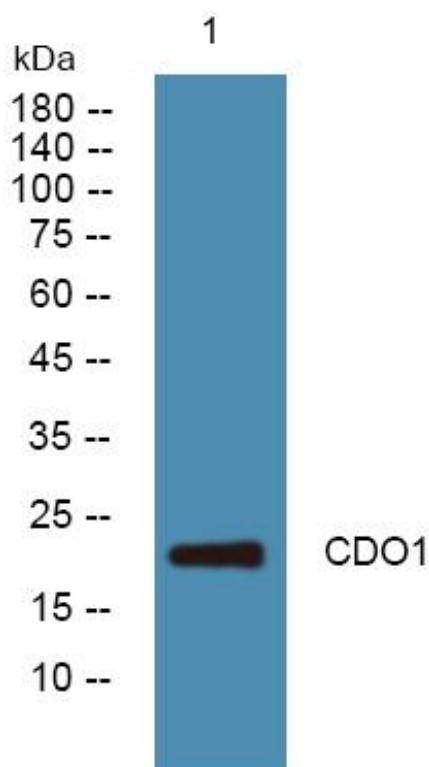
## matters needing attention

Avoid repeated freezing and thawing!

## Usage suggestions

This product can be used in immunological reaction related experiments. For more information, please consult technical personnel.

## Products Images



Western Blot analysis of various cells using CDO1 Monoclonal Antibody

Nanjing BYabscience technology Co.,Ltd