



# ACTBM Monoclonal Antibody

Catalog No	BYmab-06775
Isotype	IgG
Reactivity	Human;Rat;Mouse;
Applications	WB
Gene Name	POTEKP ACTBL3 FKSG30
Protein Name	Putative beta-actin-like protein 3 (Kappa-actin) (POTE ankyrin domain family member K)
Immunogen	Synthesized peptide derived from part region of human protein
Specificity	ACTBM Monoclonal Antibody detects endogenous levels of protein.
Formulation	Liquid in PBS containing 50% glycerol, and 0.02% sodium azide.
Source	Monoclonal, Mouse,IgG
Purification	The antibody was affinity-purified from mouse antiserum by affinity-chromatography using epitope-specific immunogen.
Dilution	WB 1:500-2000
Concentration	1 mg/ml
Purity	≥90%
Storage Stability	-20°C/1 year
Synonyms	
Observed Band	41kD
Cell Pathway	Cytoplasm, cytoskeleton .
Tissue Specificity	Expressed in some hepatocellular carcinomas.
Function	similarity:Belongs to the actin family.,subunit:Interacts with PFN1 and PFDN1. Does not interact with PFN2.,tissue specificity:Expressed in some hepatocellular carcinomas.,
Background	similarity:Belongs to the actin family.,subunit:Interacts with PFN1 and PFDN1. Does not interact with PFN2.,tissue specificity:Expressed in some hepatocellular carcinomas.,
matters needing attention	Avoid repeated freezing and thawing!

Nanjing BYabscience technology Co.,Ltd

网址: [www.njbybio.com](http://www.njbybio.com)

官方热线: 025-5229-8998

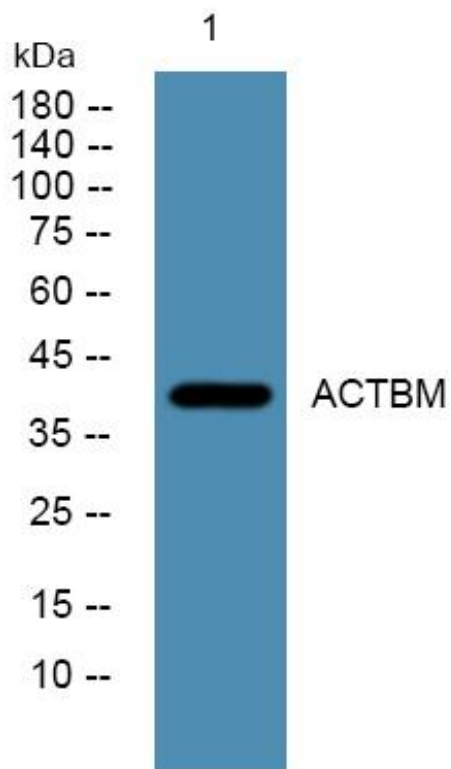
监督电话: 15950492658



### Usage suggestions

This product can be used in immunological reaction related experiments. For more information, please consult technical personnel.

## Products Images



Western Blot analysis of various cells using ACTBM Monoclonal Antibody

Nanjing BYabs science technology Co.,Ltd

网址: [www.njbybio.com](http://www.njbybio.com)

官方热线: 025-5229-8998

监督电话: 15950492658