



FAIM1 Monoclonal Antibody

Catalog No	BYmab-06607
Isotype	IgG
Reactivity	Human;Rat;Mouse;
Applications	WB
Gene Name	FAIM FAIM1
Protein Name	Fas apoptotic inhibitory molecule 1
Immunogen	Synthesized peptide derived from human protein . at AA range: 40-120
Specificity	FAIM1 Monoclonal Antibody detects endogenous levels of protein.
Formulation	Liquid in PBS containing 50% glycerol, and 0.02% sodium azide.
Source	Monoclonal, Mouse,IgG
Purification	The antibody was affinity-purified from mouse antiserum by affinity-chromatography using epitope-specific immunogen.
Dilution	WB 1:500-2000
Concentration	1 mg/ml
Purity	≥90%
Storage Stability	-20°C/1 year
Synonyms	
Observed Band	19kD
Cell Pathway	Cytoplasm .
Tissue Specificity	Brain,Testis,
Function	function:Plays a role as an inducible effector molecule that mediates Fas resistance produced by surface Ig engagement in B cells.,similarity:Belongs to the FAIM1 family.,
Background	Fas apoptotic inhibitory molecule(FAIM) Homo sapiens The protein encoded by this gene protects against death receptor-triggered apoptosis and regulates B-cell signaling and differentiation. Several transcript variants encoding different isoforms have been found for this gene. [provided by RefSeq, Jul 2011],
matters needing attention	Avoid repeated freezing and thawing!

Nanjing BYabscience technology Co.,Ltd

网址: www.njbybio.com

官方热线: 025-5229-8998

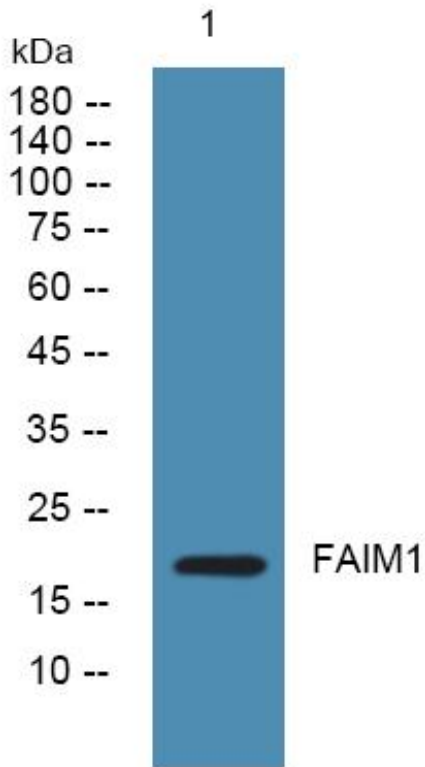
监督电话: 15950492658



Usage suggestions

This product can be used in immunological reaction related experiments. For more information, please consult technical personnel.

Products Images



Western Blot analysis of various cells using FAIM1 Monoclonal Antibody

Nanjing BYabs science technology Co.,Ltd

网址: www.njbybio.com

官方热线: 025-5229-8998

监督电话: 15950492658