



LRC42 Monoclonal Antibody

Catalog No	BYmab-05690
Isotype	IgG
Reactivity	Human;Mouse;Rat
Applications	WB
Gene Name	LRRC42
Protein Name	Leucine-rich repeat-containing protein 42
Immunogen	Synthesized peptide derived from part region of human protein
Specificity	LRC42 Monoclonal Antibody detects endogenous levels of protein.
Formulation	Liquid in PBS containing 50% glycerol, and 0.02% sodium azide.
Source	Monoclonal, Mouse,IgG
Purification	The antibody was affinity-purified from mouse antiserum by affinity-chromatography using epitope-specific immunogen.
Dilution	WB 1:500-2000
Concentration	1 mg/ml
Purity	≥90%
Storage Stability	-20°C/1 year
Synonyms	
Observed Band	47kD
Cell Pathway	
Tissue Specificity	Embryo,Placenta,Skin,
Function	PTM:Phosphorylated upon DNA damage, probably by ATM or ATR.,similarity:Belongs to the LRRC42 family.,similarity:Contains 2 LRR (leucine-rich) repeats.,
Background	PTM:Phosphorylated upon DNA damage, probably by ATM or ATR.,similarity:Belongs to the LRRC42 family.,similarity:Contains 2 LRR (leucine-rich) repeats.,
matters needing attention	Avoid repeated freezing and thawing!

Nanjing BYabscience technology Co.,Ltd

网址: www.njbybio.com

官方热线: 025-5229-8998

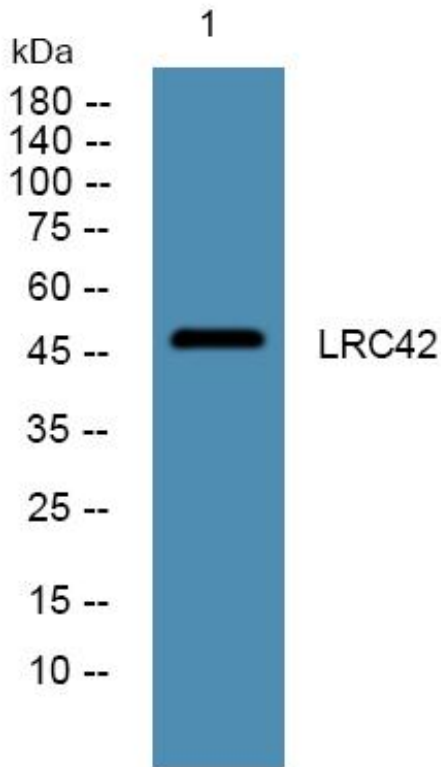
监督电话: 15950492658



Usage suggestions

This product can be used in immunological reaction related experiments. For more information, please consult technical personnel.

Products Images



Western Blot analysis of various cells using LRC42 Monoclonal Antibody

Nanjing BYabscience technology Co.,Ltd

网址: www.njbybio.com

官方热线: 025-5229-8998

监督电话: 15950492658