



RIT2 Monoclonal Antibody

Catalog No	BYmab-05621
Isotype	IgG
Reactivity	Human;Rat;Mouse
Applications	WB
Gene Name	RIT2 RIN ROC2
Protein Name	GTP-binding protein Rit2 (Ras-like protein expressed in neurons) (Ras-like without CAAX protein 2)
Immunogen	Synthesized peptide derived from part region of human protein
Specificity	RIT2 Monoclonal Antibody detects endogenous levels of protein.
Formulation	Liquid in PBS containing 50% glycerol, and 0.02% sodium azide.
Source	Monoclonal, Mouse,IgG
Purification	The antibody was affinity-purified from mouse antiserum by affinity-chromatography using epitope-specific immunogen.
Dilution	WB 1:500-2000
Concentration	1 mg/ml
Purity	≥90%
Storage Stability	-20°C/1 year
Synonyms	
Observed Band	23kD
Cell Pathway	Nucleus . Cell membrane . Colocalizes with PLXNB3 at the plasma membrane (PubMed:16122393). .
Tissue Specificity	Neuron-specific.
Function	function:Binds and exchanges GTP and GDP.,miscellaneous:Shows rapid uncatalyzed guanine nucleotide dissociation rates, which are much faster than those of most Ras subfamily members.,similarity:Belongs to the small GTPase superfamily. Ras family.,subunit:Interacts with MLLT4, the C-terminal domain of RALGDS and RLF, but not with RIN1 and PIK3CA. RLF binds exclusively to the active GTP-bound form (By similarity). Binds calmodulin.,tissue specificity:Neuron-specific.,
Background	RIN belongs to the RAS (HRAS; MIM 190020) superfamily of small GTPases (Shao et al., 1999 [PubMed 10545207]).[supplied by OMIM, Mar 2008],

Nanjing BYabscience technology Co.,Ltd

网址: www.njbybio.com

官方热线: 025-5229-8998

监督电话: 15950492658



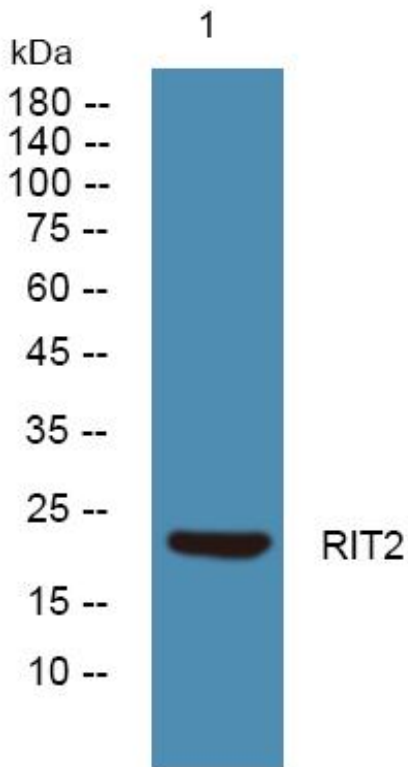
matters needing attention

Avoid repeated freezing and thawing!

Usage suggestions

This product can be used in immunological reaction related experiments. For more information, please consult technical personnel.

Products Images



Western Blot analysis of various cells using RIT2 Monoclonal Antibody