



GDN Monoclonal Antibody

Catalog No	BYmab-05601
Isotype	IgG
Reactivity	Human;Mouse;Rat
Applications	WB
Gene Name	SERPINE2 PI7 PN1
Protein Name	Glia-derived nexin (GDN) (Peptidase inhibitor 7) (PI-7) (Protease nexin 1) (PN-1) (Protease nexin I) (Serpine E2)
Immunogen	Synthesized peptide derived from part region of human protein
Specificity	GDN Monoclonal Antibody detects endogenous levels of protein.
Formulation	Liquid in PBS containing 50% glycerol, and 0.02% sodium azide.
Source	Monoclonal, Mouse,IgG
Purification	The antibody was affinity-purified from mouse antiserum by affinity-chromatography using epitope-specific immunogen.
Dilution	WB 1:500-2000
Concentration	1 mg/ml
Purity	≥90%
Storage Stability	-20°C/1 year
Synonyms	
Observed Band	43kD
Cell Pathway	Secreted, extracellular space.
Tissue Specificity	Hippocampus,Skin,
Function	function:Serine protease inhibitor with activity toward thrombin, trypsin, and urokinase. Promotes neurite extension by inhibiting thrombin. Binds heparin.,similarity:Belongs to the serpin family.,
Background	This gene encodes a member of the serpin family of proteins, a group of proteins that inhibit serine proteases. Thrombin, urokinase, plasmin and trypsin are among the proteases that this family member can inhibit. This gene is a susceptibility gene for chronic obstructive pulmonary disease and for emphysema. Alternative splicing results in multiple transcript variants. [provided by RefSeq, Aug 2012],
matters needing attention	Avoid repeated freezing and thawing!

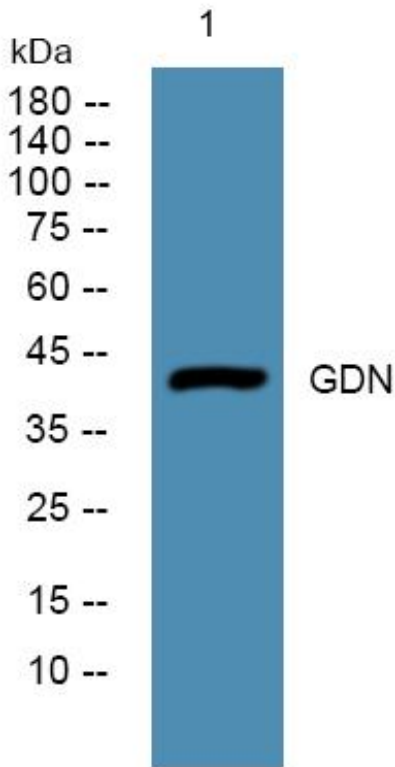
Nanjing BYabscience technology Co.,Ltd



Usage suggestions

This product can be used in immunological reaction related experiments. For more information, please consult technical personnel.

Products Images



Western Blot analysis of various cells using GDN Monoclonal Antibody

Nanjing BYabs science technology Co.,Ltd

网址: www.njbybio.com

官方热线: 025-5229-8998

监督电话: 15950492658