



CGL Monoclonal Antibody

Catalog No	BYmab-05499
Isotype	IgG
Reactivity	Human;Mouse
Applications	WB
Gene Name	CTH
Protein Name	Cystathionine gamma-lyase (EC 4.4.1.1) (Cysteine-protein sulfhydrase) (Gamma-cystathionase)
Immunogen	Synthesized peptide derived from part region of human protein
Specificity	CGL Monoclonal Antibody detects endogenous levels of protein.
Formulation	Liquid in PBS containing 50% glycerol, and 0.02% sodium azide.
Source	Monoclonal, Mouse,IgG
Purification	The antibody was affinity-purified from mouse antiserum by affinity-chromatography using epitope-specific immunogen.
Dilution	WB 1:500-2000
Concentration	1 mg/ml
Purity	≥90%
Storage Stability	-20°C/1 year
Synonyms	
Observed Band	44kD
Cell Pathway	Cytoplasm.
Tissue Specificity	Highly expressed in liver (PubMed:10727430, PubMed:20305127). Also in muscle and lower expression in most tissues except heart, pituitary gland, spleen, thymus, and vascular tissue, where it is hardly detected (PubMed:20305127).
Function	catalytic activity:L-cystathionine + H(2)O = L-cysteine + NH(3) + 2-oxobutanoate.,cofactor:Pyridoxal phosphate.,disease:Defects in CTH are the cause of cystathioninuria [MIM:219500]. CTH is an autosomal recessive phenotype characterized by abnormal accumulation of plasma cystathionine, leading to increased urinary excretion.,pathway:Amino-acid biosynthesis; L-cysteine biosynthesis; L-cysteine from L-homocysteine and L-serine: step 2/2.,PTM:Phosphorylated upon DNA damage, probably by ATM or ATR.,similarity:Belongs to the trans-sulfuration enzymes family.,subunit:Homotetramer.,

Nanjing BYabscience technology Co.,Ltd

网址: www.njbybio.com

官方热线: 025-5229-8998

监督电话: 15950492658



Background

This gene encodes a cytoplasmic enzyme in the trans-sulfuration pathway that converts cystathione derived from methionine into cysteine. Glutathione synthesis in the liver is dependent upon the availability of cysteine. Mutations in this gene cause cystathioninuria. Alternative splicing of this gene results in three transcript variants encoding different isoforms. [provided by RefSeq, Jun 2010],

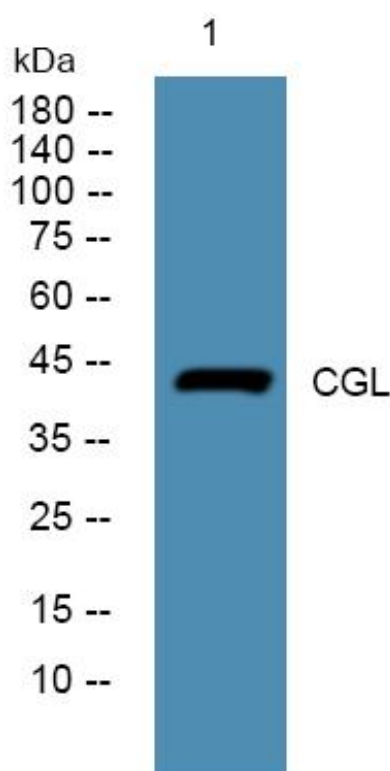
matters needing attention

Avoid repeated freezing and thawing!

Usage suggestions

This product can be used in immunological reaction related experiments. For more information, please consult technical personnel.

Products Images



Western Blot analysis of various cells using CGL Monoclonal Antibody