



# CLD23 Monoclonal Antibody

|                           |   |
|---------------------------|---|
| <b>Catalog No</b>         | BYmab-05478   |
| <b>Isotype</b>            | IgG   |
| <b>Reactivity</b>         | Human;Mouse   |
| <b>Applications</b>       | WB  |
| <b>Gene Name</b>          | CLDN23  |
| <b>Protein Name</b>       | Claudin-23  |
| <b>Immunogen</b>          | Synthesized peptide derived from part region of human protein   |
| <b>Specificity</b>        | CLD23 Monoclonal Antibody detects endogenous levels of protein.   |
| <b>Formulation</b>        | Liquid in PBS containing 50% glycerol, and 0.02% sodium azide.  |
| <b>Source</b>             | Monoclonal, Mouse,IgG   |
| <b>Purification</b>       | The antibody was affinity-purified from mouse antiserum by affinity-chromatography using epitope-specific immunogen.  |
| <b>Dilution</b>           | WB 1:500-2000   |
| <b>Concentration</b>      | 1 mg/ml   |
| <b>Purity</b>             | ≥90%  |
| <b>Storage Stability</b>  | -20°C/1 year  |
| <b>Synonyms</b>           |   |
| <b>Observed Band</b>      | 32kD  |
| <b>Cell Pathway</b>       | Cell junction, tight junction . Cell membrane ; Multi-pass membrane protein .   |
| <b>Tissue Specificity</b> | Expressed in germinal center B-cells, placenta, stomach as well as in colon tumor.  |
| <b>Function</b>           | function:Plays a major role in tight junction-specific obliteration of the intercellular space, through calcium-independent cell-adhesion activity.,similarity:Belongs to the claudin family.,tissue specificity:Expressed in germinal center B-cells, placenta, stomach as well as in colon tumor.,  |
| <b>Background</b>         | This gene encodes a member of the claudin family. Claudins are integral membrane proteins and components of tight junction strands. Tight junction strands serve as a physical barrier to prevent solutes and water from passing freely through the paracellular space between epithelial or endothelial cell sheets, and also play critical roles in maintaining cell polarity and signal transductions. This gene is expressed in germinal center B-cells, placenta and stomach as well as in colon tumor. This gene is down-regulated in intestinal type gastric cancer. |

**Nanjing BYabscience technology Co.,Ltd**



[provided by RefSeq, Aug 2010],

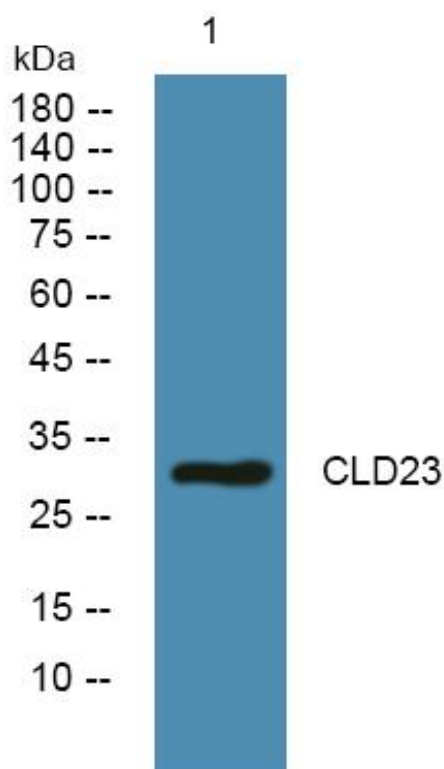
**matters needing attention**

Avoid repeated freezing and thawing!

**Usage suggestions**

This product can be used in immunological reaction related experiments. For more information, please consult technical personnel.

## Products Images



Western Blot analysis of various cells using CLD23 Monoclonal Antibody