



TIGD3 Monoclonal Antibody

Catalog No	BYmab-04243
Isotype	IgG
Reactivity	Human;Rat;Mouse;
Applications	WB
Gene Name	TIGD3
Protein Name	Tigger transposable element-derived protein 3
Immunogen	The antiserum was produced against synthesized peptide derived from human TIGD3. AA range:381-430
Specificity	TIGD3 Monoclonal Antibody detects endogenous levels of TIGD3 protein.
Formulation	Liquid in PBS containing 50% glycerol, 0.5% BSA and 0.02% sodium azide.
Source	Monoclonal, Mouse,IgG
Purification	The antibody was affinity-purified from mouse antiserum by affinity-chromatography using epitope-specific immunogen.
Dilution	WB 1:500-2000
Concentration	1 mg/ml
Purity	≥90%
Storage Stability	-20°C/1 year
Synonyms	TIGD3; Tigger transposable element-derived protein 3
Observed Band	55kD
Cell Pathway	Nucleus .
Tissue Specificity	Lung,
Function	similarity:Belongs to the tigger transposable element derived protein family.,similarity:Contains 1 DDE domain.,similarity:Contains 1 HTH CENPB-type DNA-binding domain.,similarity:Contains 1 HTH psq-type DNA-binding domain.,
Background	The protein encoded by this gene belongs to the tigger subfamily of the pogo superfamily of DNA-mediated transposons in humans. These proteins are related to DNA transposons found in fungi and nematodes, and more distantly to the Tc1 and mariner transposases. They are also very similar to the major mammalian centromere protein B. The exact function of this gene is not known. [provided by RefSeq, Jul 2008],

Nanjing BYabscience technology Co.,Ltd

网址: www.njbybio.com

官方热线: 025-5229-8998

监督电话: 15950492658



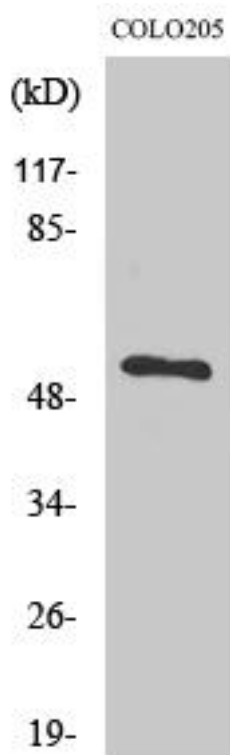
matters needing attention

Avoid repeated freezing and thawing!

Usage suggestions

This product can be used in immunological reaction related experiments. For more information, please consult technical personnel.

Products Images



Western Blot analysis of various cells using TIGD3 Monoclonal Antibody