



Sideroflexin-4 Monoclonal Antibody

Catalog No	BYmab-04210
Isotype	IgG
Reactivity	Human;Rat;Mouse;
Applications	WB
Gene Name	SFXN4
Protein Name	Sideroflexin-4
Immunogen	The antiserum was produced against synthesized peptide derived from human SFXN4. AA range:1-50
Specificity	Sideroflexin-4 Monoclonal Antibody detects endogenous levels of Sideroflexin-4 protein.
Formulation	Liquid in PBS containing 50% glycerol, 0.5% BSA and 0.02% sodium azide.
Source	Monoclonal, Mouse,IgG
Purification	The antibody was affinity-purified from mouse antiserum by affinity-chromatography using epitope-specific immunogen.
Dilution	WB 1:500-2000
Concentration	1 mg/ml
Purity	≥90%
Storage Stability	-20°C/1 year
Synonyms	SFXN4; BCRM1; Sideroflexin-4; Breast cancer resistance marker 1
Observed Band	37kD
Cell Pathway	Mitochondrion inner membrane ; Multi-pass membrane protein .
Tissue Specificity	Mammary tumor,Placenta,Tongue,
Function	function:Potential iron transporter.,similarity:Belongs to the sideroflexin family.,
Background	This gene encodes a member of the sideroflexin family. The encoded protein is a transmembrane protein of the inner mitochondrial membrane, and is required for mitochondrial respiratory homeostasis and erythropoiesis. Mutations in this gene are associated with mitochondriopathy and macrocytic anemia. Alternatively spliced transcript variants have been found in this gene. [provided by RefSeq, Jan 2014],

Nanjing BYabscience technology Co.,Ltd

网址: www.njbybio.com

官方热线: 025-5229-8998

监督电话: 15950492658



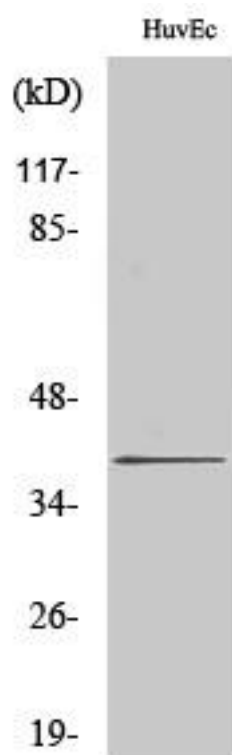
matters needing attention

Avoid repeated freezing and thawing!

Usage suggestions

This product can be used in immunological reaction related experiments. For more information, please consult technical personnel.

Products Images



Western Blot analysis of various cells using Sideroflexin-4 Monoclonal Antibody