



# Ribosomal Protein S12 Monoclonal Antibody

<b>Catalog No</b>	BYmab-04155
<b>Isotype</b>	IgG
<b>Reactivity</b>	Human;Mouse;Rat
<b>Applications</b>	WB
<b>Gene Name</b>	RPS12
<b>Protein Name</b>	40S ribosomal protein S12
<b>Immunogen</b>	The antiserum was produced against synthesized peptide derived from human RPS12. AA range:83-132
<b>Specificity</b>	Ribosomal Protein S12 Monoclonal Antibody detects endogenous levels of Ribosomal Protein S12 protein.
<b>Formulation</b>	Liquid in PBS containing 50% glycerol, 0.5% BSA and 0.02% sodium azide.
<b>Source</b>	Monoclonal, Mouse,IgG
<b>Purification</b>	The antibody was affinity-purified from mouse antiserum by affinity-chromatography using epitope-specific immunogen.
<b>Dilution</b>	WB 1:500-2000
<b>Concentration</b>	1 mg/ml
<b>Purity</b>	≥90%
<b>Storage Stability</b>	-20°C/1 year
<b>Synonyms</b>	RPS12; 40S ribosomal protein S12
<b>Observed Band</b>	15kD
<b>Cell Pathway</b>	Cytoplasm.
<b>Tissue Specificity</b>	Cervix carcinoma,Embryonic stem cell,Hepatoma,Mammary carcinoma,Placenta,Skin,Testi
<b>Function</b>	similarity:Belongs to the ribosomal protein S12e family.,
<b>Background</b>	Ribosomes, the organelles that catalyze protein synthesis, consist of a small 40S subunit and a large 60S subunit. Together these subunits are composed of 4 RNA species and approximately 80 structurally distinct proteins. This gene encodes a ribosomal protein that is a component of the 40S subunit. The protein belongs to the S12E family of ribosomal proteins. It is located in the cytoplasm. Increased expression of this gene in colorectal cancers compared to matched normal colonic mucosa has been observed. As is typical for genes encoding ribosomal proteins, there are multiple processed pseudogenes of this gene dispersed through the

Nanjing BYabscience technology Co.,Ltd



genome. [provided by RefSeq, Jul 2008],

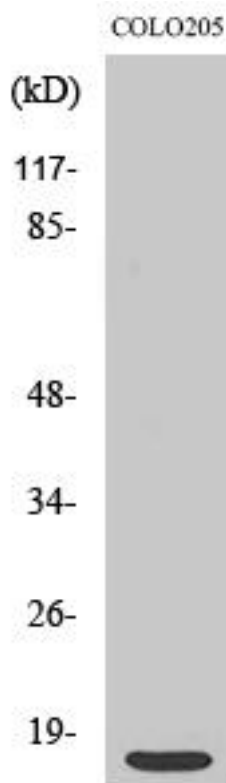
**matters needing attention**

Avoid repeated freezing and thawing!

**Usage suggestions**

This product can be used in immunological reaction related experiments. For more information, please consult technical personnel.

## Products Images



Western Blot analysis of various cells using Ribosomal Protein S12 Monoclonal Antibody

Nanjing BYabs science technology Co.,Ltd

网址: [www.njbybio.com](http://www.njbybio.com)

官方热线: 025-5229-8998

监督电话: 15950492658