



MRP-L11 Monoclonal Antibody

Catalog No	BYmab-03974
Isotype	IgG
Reactivity	Human;Monkey
Applications	WB
Gene Name	MRPL11
Protein Name	39S ribosomal protein L11 mitochondrial
Immunogen	The antiserum was produced against synthesized peptide derived from human MRPL11. AA range:21-70
Specificity	MRP-L11 Monoclonal Antibody detects endogenous levels of MRP-L11 protein.
Formulation	Liquid in PBS containing 50% glycerol, 0.5% BSA and 0.02% sodium azide.
Source	Monoclonal, Mouse,IgG
Purification	The antibody was affinity-purified from mouse antiserum by affinity-chromatography using epitope-specific immunogen.
Dilution	WB 1:500-2000
Concentration	1 mg/ml
Purity	≥90%
Storage Stability	-20°C/1 year
Synonyms	MRPL11; CGI-113; 39S ribosomal protein L11; mitochondrial; L11mt; MRP-L11
Observed Band	21kD
Cell Pathway	Mitochondrion .
Tissue Specificity	Duodenum,Lymph,
Function	similarity:Belongs to the ribosomal protein L11P family.,
Background	This nuclear gene encodes a 39S subunit component of the mitochondrial ribosome. Alternative splicing results in multiple transcript variants. Pseudogenes for this gene are found on chromosomes 5 and 12. [provided by RefSeq, May 2014],
matters needing attention	Avoid repeated freezing and thawing!

Nanjing BYabscience technology Co.,Ltd

网址: www.njbybio.com

官方热线: 025-5229-8998

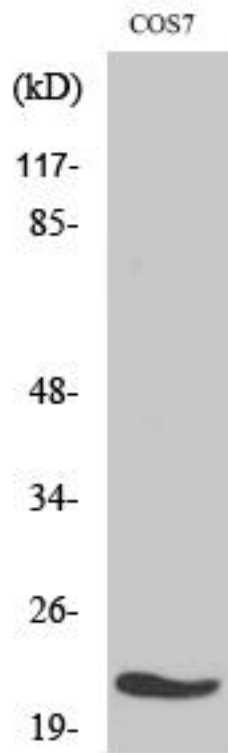
监督电话: 15950492658



Usage suggestions

This product can be used in immunological reaction related experiments. For more information, please consult technical personnel.

Products Images



Western Blot analysis of various cells using MRP-L11 Monoclonal Antibody

Nanjing BYabs science technology Co.,Ltd

网址: www.njbybio.com

官方热线: 025-5229-8998

监督电话: 15950492658