



Epsin 2 Monoclonal Antibody

Catalog No	BYmab-03860
Isotype	IgG
Reactivity	Human;Mouse;Rat
Applications	WB
Gene Name	EPN2
Protein Name	Epsin-2
Immunogen	The antiserum was produced against synthesized peptide derived from human EPN2. AA range:271-320
Specificity	Epsin 2 Monoclonal Antibody detects endogenous levels of Epsin 2 protein.
Formulation	Liquid in PBS containing 50% glycerol, 0.5% BSA and 0.02% sodium azide.
Source	Monoclonal, Mouse,IgG
Purification	The antibody was affinity-purified from mouse antiserum by affinity-chromatography using epitope-specific immunogen.
Dilution	WB 1:500-2000
Concentration	1 mg/ml
Purity	≥90%
Storage Stability	-20°C/1 year
Synonyms	EPN2; KIAA1065; Epsin-2; EPS-15-interacting protein 2
Observed Band	68kD
Cell Pathway	Cytoplasm . Cytoplasmic vesicle, clathrin-coated vesicle . In punctate structures throughout the cell, associated with clathrin-coated vesicles, and particularly concentrated in the region of the Golgi complex.
Tissue Specificity	Highest expression is found in brain. Detected at lower levels in lung and liver.
Function	caution:The sequence shown here is derived from an Ensembl automatic analysis pipeline and should be considered as preliminary data.,domain:The DPW repeat domain is involved in AP-2 and clathrin binding.,domain:The NPF repeat domain is involved in EPS15 binding.,function:Plays a role in the formation of clathrin-coated invaginations and endocytosis.,PTM:Ubiquitinated.,similarity:Belongs to the epsin family.,similarity:Contains 1 ENTH (epsin N-terminal homology) domain.,similarity:Contains 2 UIM (ubiquitin-interacting motif) repeats.,subcellular location:In punctate structures throughout the cell, associated with clathrin-coated vesicles, and particularly concentrated in the region of the Golgi

Nanjing BYabscience technology Co.,Ltd



complex.,subunit: Binds EPS15 (By similarity). Binds AP-2 and clathrin.,tissue specificity: Highest expression is found in brain. Detected at lower levels in lung and liver.,

Background

This gene encodes a protein which interacts with clathrin and adaptor-related protein complex 2, alpha 1 subunit. The protein is found in a brain-derived clathrin-coated vesicle fraction and localizes to the peri-Golgi region and the cell periphery. The protein is thought to be involved in clathrin-mediated endocytosis. Alternate splicing of this gene results in multiple transcript variants encoding different isoforms. [provided by RefSeq, Jul 2008],

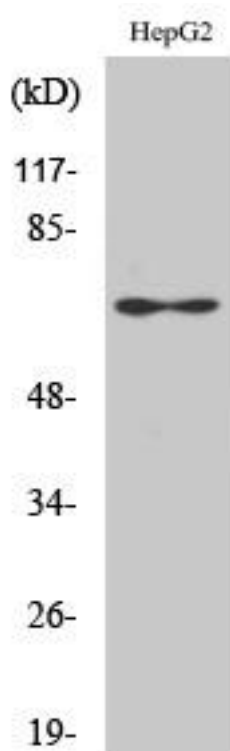
matters needing attention

Avoid repeated freezing and thawing!

Usage suggestions

This product can be used in immunological reaction related experiments. For more information, please consult technical personnel.

Products Images



Western Blot analysis of various cells using Epsin 2 Monoclonal Antibody

Nanjing BYabs science technology Co.,Ltd

网址: www.njbybio.com

官方热线: 025-5229-8998

监督电话: 15950492658