



CPA1 Monoclonal Antibody

Catalog No	BYmab-03783
Isotype	IgG
Reactivity	Human;Rat;Mouse;
Applications	WB
Gene Name	CPA1
Protein Name	Carboxypeptidase A1
Immunogen	The antiserum was produced against synthesized peptide derived from human Carboxypeptidase A1. AA range:301-350
Specificity	CPA1 Monoclonal Antibody detects endogenous levels of CPA1 protein.
Formulation	Liquid in PBS containing 50% glycerol, 0.5% BSA and 0.02% sodium azide.
Source	Monoclonal, Mouse,IgG
Purification	The antibody was affinity-purified from mouse antiserum by affinity-chromatography using epitope-specific immunogen.
Dilution	WB 1:500-2000
Concentration	1 mg/ml
Purity	≥90%
Storage Stability	-20°C/1 year
Synonyms	CPA1; CPA; Carboxypeptidase A1
Observed Band	47kD
Cell Pathway	Secreted.
Tissue Specificity	Pancreas,
Function	catalytic activity:Release of a C-terminal amino acid, but little or no action with -Asp, -Glu, -Arg, -Lys or -Pro.,cofactor:Binds 1 zinc ion per subunit.,similarity:Belongs to the peptidase M14 family.,subunit:Monomer. May form a complex with proelastase 2.,
Background	This gene encodes a member of the carboxypeptidase A family of zinc metalloproteases. This enzyme is produced in the pancreas and preferentially cleaves C-terminal branched-chain and aromatic amino acids from dietary proteins. This gene and several family members are present in a gene cluster on chromosome 7. Mutations in this gene may be linked to chronic pancreatitis, while elevated protein levels may be associated with pancreatic cancer. [provided by

Nanjing BYabscience technology Co.,Ltd



RefSeq, Jan 2015],

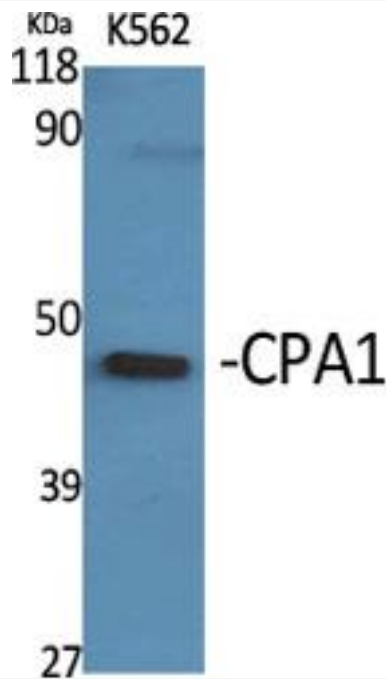
matters needing attention

Avoid repeated freezing and thawing!

Usage suggestions

This product can be used in immunological reaction related experiments. For more information, please consult technical personnel.

Products Images



Western Blot analysis of various cells using CPA1 Monoclonal Antibody

Nanjing BYabs science technology Co.,Ltd

网址: www.njbybio.com

官方热线: 025-5229-8998

监督电话: 15950492658