



A Cyclase V/VI Monoclonal Antibody

| | |
|---------------------------|--|
| Catalog No | BYmab-03674 |
| Isotype | IgG |
| Reactivity | Human;Mouse;Rat |
| Applications | WB |
| Gene Name | ADCY5/ADCY6 |
| Protein Name | Adenylate cyclase type 5/6 |
| Immunogen | The antiserum was produced against synthesized peptide derived from human ADCY5/6. AA range:931-980 |
| Specificity | A Cyclase V/VI Monoclonal Antibody detects endogenous levels of A Cyclase V/VI protein. |
| Formulation | Liquid in PBS containing 50% glycerol, 0.5% BSA and 0.02% sodium azide. |
| Source | Monoclonal, Mouse,IgG |
| Purification | The antibody was affinity-purified from mouse antiserum by affinity-chromatography using epitope-specific immunogen. |
| Dilution | WB 1:500-2000 |
| Concentration | 1 mg/ml |
| Purity | ≥90% |
| Storage Stability | -20°C/1 year |
| Synonyms | ADCY5; Adenylate cyclase type 5; ATP pyrophosphate-lyase 5; Adenylate cyclase type V; Adenylyl cyclase 5; ADCY6; KIAA0422; Adenylate cyclase type 6; ATP pyrophosphate-lyase 6; Adenylate cyclase type VI; Adenylyl cyclase 6; Ca(2+)-inhibitabl |
| Observed Band | 138kD |
| Cell Pathway | Cell membrane ; Multi-pass membrane protein. Cell projection, cilium . |
| Tissue Specificity | Detected in pancreas islets (at protein level). Detected in pancreas islets. |
| Function | catalytic activity:ATP = 3',5'-cyclic AMP + diphosphate.,cofactor:Binds 2 magnesium ions per subunit.,enzyme regulation:Inhibition by calcium in the submicromolar concentration range.,function:This is a membrane-bound, calcium-inhibitable adenylyl cyclase.,similarity:Belongs to the adenylyl cyclase class-4/guanylyl cyclase family.,similarity:Contains 2 guanylate cyclase domains., |

Nanjing BYabscience technology Co.,Ltd



Background

This gene encodes a member of the membrane-bound adenylyl cyclase enzymes. Adenylyl cyclases mediate G protein-coupled receptor signaling through the synthesis of the second messenger cAMP. Activity of the encoded protein is stimulated by the Gs alpha subunit of G protein-coupled receptors and is inhibited by protein kinase A, calcium and Gi alpha subunits. Single nucleotide polymorphisms in this gene may be associated with low birth weight and type 2 diabetes. Alternatively spliced transcript variants that encode different isoforms have been observed for this gene. [provided by RefSeq, Dec 2010],

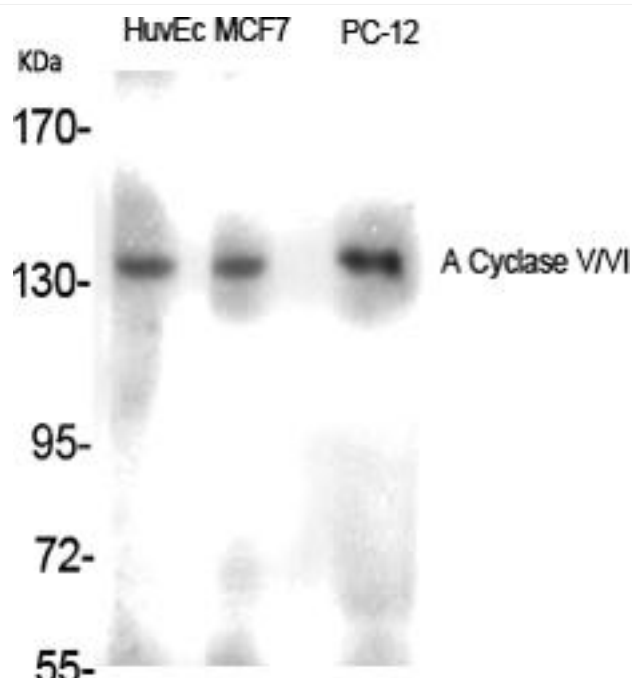
matters needing attention

Avoid repeated freezing and thawing!

Usage suggestions

This product can be used in immunological reaction related experiments. For more information, please consult technical personnel.

Products Images



Western Blot analysis of various cells using A Cyclase V/VI Monoclonal Antibody