



Dok-1 (phospho Tyr362) Monoclonal Antibody

Catalog No	BYmab-03513
Isotype	IgG
Reactivity	Human;Mouse;Rat
Applications	WB
Gene Name	DOK1
Protein Name	Docking protein 1
Immunogen	The antiserum was produced against synthesized peptide derived from human p62 Dok around the phosphorylation site of Tyr362. AA range:329-378
Specificity	Phospho-Dok-1 (Y362) Monoclonal Antibody detects endogenous levels of Dok-1 protein only when phosphorylated at Y362.
Formulation	Liquid in PBS containing 50% glycerol, 0.5% BSA and 0.02% sodium azide.
Source	Monoclonal, Mouse,IgG
Purification	The antibody was affinity-purified from mouse antiserum by affinity-chromatography using epitope-specific immunogen.
Dilution	WB 1:500-2000
Concentration	1 mg/ml
Purity	≥90%
Storage Stability	-20°C/1 year
Synonyms	DOK1; Docking protein 1; Downstream of tyrosine kinase 1; p62(dok); pp62
Observed Band	55kD
Cell Pathway	[Isoform 1]: Cytoplasm. Nucleus.; [Isoform 3]: Cytoplasm, perinuclear region.
Tissue Specificity	Expressed in pancreas, heart, leukocyte and spleen. Expressed in both resting and activated peripheral blood T-cells. Expressed in breast cancer.
Function	domain:The PTB domain mediates receptor interaction.,function:DOK proteins are enzymatically inert adaptor or scaffolding proteins. They provide a docking platform for the assembly of multimolecular signaling complexes. DOK1 appears to be a negative regulator of the insulin signaling pathway. Modulates integrin activation by competing with talin for the same binding site on ITGB3.,PTM:Constitutively tyrosine-phosphorylated.,PTM:Phosphorylated on tyrosine residues by the insulin receptor kinase. Results in the negative regulation of the insulin signaling pathway.,similarity:Belongs to the DOK family. Type A subfamily.,similarity:Contains 1 IRS-type PTB domain.,similarity:Contains 1 PH domain.,subunit:Interacts with ABL (By similarity). Interacts with RasGAP and INPP5D/SHIP1. Interacts directly with phosphorylated ITGB3.,tissue

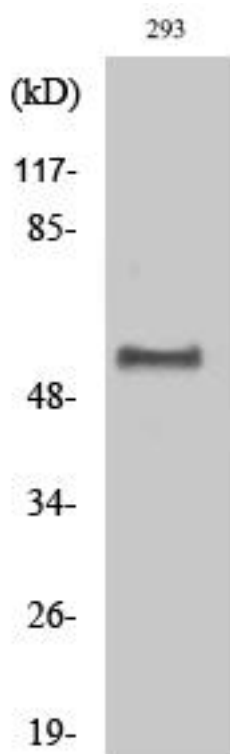
Nanjing BYabscience technology Co.,Ltd



specificity: Expressed in pancreas, heart, leukocyte and spleen

Background	docking protein 1(DOK1) Homo sapiens The protein encoded by this gene is part of a signal transduction pathway downstream of receptor tyrosine kinases. The encoded protein is a scaffold protein that helps form a platform for the assembly of multiprotein signaling complexes. Several transcript variants encoding different isoforms have been found for this gene. [provided by RefSeq, Jan 2016],
matters needing attention	Avoid repeated freezing and thawing!
Usage suggestions	This product can be used in immunological reaction related experiments. For more information, please consult technical personnel.

Products Images



Western Blot analysis of various cells using Dok-1 (phospho Tyr362) Monoclonal Antibody

Nanjing BYabscience technology Co.,Ltd