



# Cleaved-Plasma Kallikrein HC (R390) Monoclonal Antibody

Catalog No	BYmab-03356
Isotype	IgG
Reactivity	Human;Rat;Mouse;
Applications	WB
Gene Name	KLKB1
Protein Name	Plasma kallikrein
Immunogen	The antiserum was produced against synthesized peptide derived from human KLKB1. AA range:341-390
Specificity	Cleaved-Plasma Kallikrein HC (R390) Monoclonal Antibody detects endogenous levels of fragment of activated Plasma Kallikrein HC protein resulting from cleavage adjacent to R390.
Formulation	Liquid in PBS containing 50% glycerol, 0.5% BSA and 0.02% sodium azide.
Source	Monoclonal, Mouse,IgG
Purification	The antibody was affinity-purified from mouse antiserum by affinity-chromatography using epitope-specific immunogen.
Dilution	WB 1:500-2000
Concentration	1 mg/ml
Purity	≥90%
Storage Stability	-20°C/1 year
Synonyms	KLKB1; KLK3; Plasma kallikrein; Fletcher factor; Kininogenin; Plasma prekallikrein
Observed Band	45kD
Cell Pathway	Secreted.
Tissue Specificity	Colon,Liver,Plasma,
Function	catalytic activity: Cleaves selectively Arg-I-Xaa and Lys-I-Xaa bonds, including Lys-I-Arg and Arg-I-Ser bonds in (human) kininogen to release bradykinin.,disease: Defects in KLKB1 are the cause of prekallikrein deficiency (PKK deficiency) [MIM:612423]; also called Fletcher factor deficiency. This disorder is a blood coagulation defect.,function: The enzyme cleaves Lys-Arg and Arg-Ser bonds. It activates, in a reciprocal reaction, factor XII after its binding to a negatively charged surface. It also releases bradykinin from HMW kininogen and

Nanjing BYabscience technology Co.,Ltd



may also play a role in the renin-angiotensin system by converting prorenin into renin.,similarity:Belongs to the peptidase S1 family.,similarity:Belongs to the peptidase S1 family. Plasma kallikrein subfamily.,similarity:Contains 1 peptidase S1 domain.,similarity:Contains 4 apple domains.,subunit:The zymogen is activated by factor XIIa, which cleaves t

## Background

This gene encodes a glycoprotein that participates in the surface-dependent activation of blood coagulation, fibrinolysis, kinin generation and inflammation. The encoded preproprotein present in plasma as a non-covalent complex with high molecular weight kininogen undergoes proteolytic processing mediated by activated coagulation factor XII to generate a disulfide-linked, heterodimeric serine protease comprised of heavy and light chains. Certain mutations in this gene cause prekallikrein deficiency. Alternative splicing results in multiple transcript variants encoding different isoforms. [provided by RefSeq, Jan 2016],

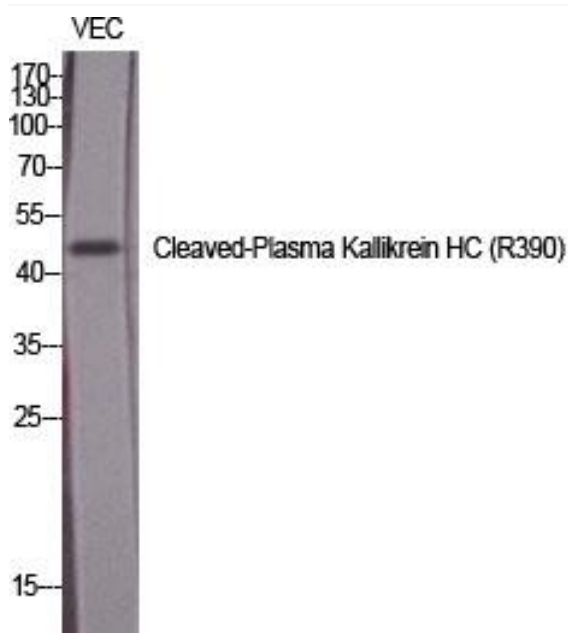
## matters needing attention

Avoid repeated freezing and thawing!

## Usage suggestions

This product can be used in immunological reaction related experiments. For more information, please consult technical personnel.

## Products Images



Western Blot analysis of various cells using  
Cleaved-Plasma Kallikrein HC (R390) Monoclonal  
Antibody