



# EAR2 Monoclonal Antibody

Catalog No	BYmab-03308
Isotype	IgG
Reactivity	Human;Mouse;Rat
Applications	WB
Gene Name	NR2F6
Protein Name	Nuclear receptor subfamily 2 group F member 6
Immunogen	The antiserum was produced against synthesized peptide derived from human NR2F6. AA range:11-60
Specificity	EAR2 Monoclonal Antibody detects endogenous levels of EAR2 protein.
Formulation	Liquid in PBS containing 50% glycerol, 0.5% BSA and 0.02% sodium azide.
Source	Monoclonal, Mouse,IgG
Purification	The antibody was affinity-purified from mouse antiserum by affinity-chromatography using epitope-specific immunogen.
Dilution	WB 1:500-2000
Concentration	1 mg/ml
Purity	≥90%
Storage Stability	-20°C/1 year
Synonyms	NR2F6; EAR2; ERBAL2; Nuclear receptor subfamily 2 group F member 6; V-erbA-related protein 2; EAR-2
Observed Band	42kD
Cell Pathway	Nucleus .
Tissue Specificity	Expressed in heart, placenta, liver, skeletal muscle, kidney and pancreas.
Function	similarity:Belongs to the nuclear hormone receptor family. NR2 subfamily.,similarity:Contains 1 nuclear receptor DNA-binding domain.,
Background	similarity:Belongs to the nuclear hormone receptor family. NR2 subfamily.,similarity:Contains 1 nuclear receptor DNA-binding domain.,
matters needing attention	Avoid repeated freezing and thawing!

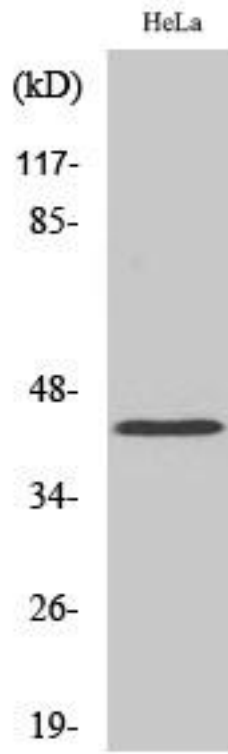
Nanjing BYabscience technology Co.,Ltd



### Usage suggestions

This product can be used in immunological reaction related experiments. For more information, please consult technical personnel.

## Products Images



Western Blot analysis of various cells using EAR2 Monoclonal Antibody

Nanjing BYabs science technology Co.,Ltd

网址: [www.njbybio.com](http://www.njbybio.com)

官方热线: 025-5229-8998

监督电话: 15950492658