



Synphilin-1 Monoclonal Antibody

Catalog No	BYmab-03190
Isotype	IgG
Reactivity	Human;Mouse
Applications	WB
Gene Name	SNCAIP
Protein Name	Synphilin-1
Immunogen	The antiserum was produced against synthesized peptide derived from human Synphilin-1. AA range:797-846
Specificity	Synphilin-1 Monoclonal Antibody detects endogenous levels of Synphilin-1 protein.
Formulation	Liquid in PBS containing 50% glycerol, 0.5% BSA and 0.02% sodium azide.
Source	Monoclonal, Mouse,IgG
Purification	The antibody was affinity-purified from mouse antiserum by affinity-chromatography using epitope-specific immunogen.
Dilution	WB 1:500-2000
Concentration	1 mg/ml
Purity	≥90%
Storage Stability	-20°C/1 year
Synonyms	SNCAIP; Synphilin-1; Sph1; Alpha-synuclein-interacting protein
Observed Band	100kD
Cell Pathway	Cytoplasm . Detected in cytoplasmic inclusion bodies, together with SNCA.
Tissue Specificity	Detected in brain (at protein level). Widely expressed, with highest levels in brain, heart and placenta.
Function	disease:Defects in SNCAIP are a cause of Parkinson disease (PD) [MIM:168600]. PD is a complex, multifactorial disorder that typically manifests after the age of 50 years, although early-onset cases (before 50 years) are known. PD generally arises as a sporadic condition but is occasionally inherited as a simple mendelian trait. Although sporadic and familial PD are very similar, inherited forms of the disease usually begin at earlier ages and are associated with atypical clinical features. PD is characterized by bradykinesia, resting tremor, muscular rigidity and postural instability, as well as by a clinically significant response to treatment with levodopa. The pathology involves the loss of dopaminergic neurons in the substantia nigra and the presence of Lewy bodies (intraneuronal accumulations of aggregated proteins), in surviving neurons in various areas of the

Nanjing BYabscience technology Co.,Ltd



brain.,miscellaneous:

Background

This gene encodes a protein containing several protein-protein interaction domains, including ankyrin-like repeats, a coiled-coil domain, and an ATP/GTP-binding motif. The encoded protein interacts with alpha-synuclein in neuronal tissue and may play a role in the formation of cytoplasmic inclusions and neurodegeneration. A mutation in this gene has been associated with Parkinson's disease. Alternative splicing results in multiple transcript variants. [provided by RefSeq, Apr 2015],

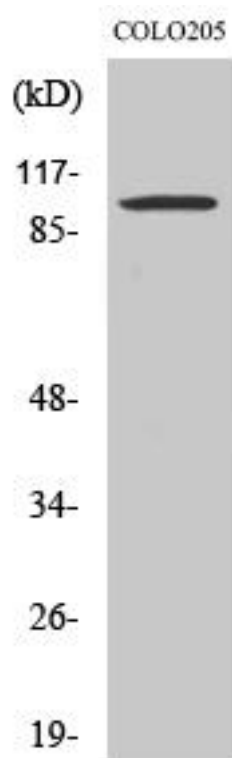
matters needing attention

Avoid repeated freezing and thawing!

Usage suggestions

This product can be used in immunological reaction related experiments. For more information, please consult technical personnel.

Products Images



Western Blot analysis of various cells using Synphilin-1 Monoclonal Antibody

Nanjing BYabs science technology Co.,Ltd

网址: www.njbybio.com

官方热线: 025-5229-8998

监督电话: 15950492658