



S-100A16 Monoclonal Antibody

Catalog No	BYmab-03179
Isotype	IgG
Reactivity	Human;Rat
Applications	WB
Gene Name	S100A16
Protein Name	Protein S100-A16
Immunogen	The antiserum was produced against synthesized peptide derived from human S100A16. AA range:19-68
Specificity	S-100A16 Monoclonal Antibody detects endogenous levels of S-100A16 protein.
Formulation	Liquid in PBS containing 50% glycerol, 0.5% BSA and 0.02% sodium azide.
Source	Monoclonal, Mouse,IgG
Purification	The antibody was affinity-purified from mouse antiserum by affinity-chromatography using epitope-specific immunogen.
Dilution	WB 1:500-2000
Concentration	1 mg/ml
Purity	≥90%
Storage Stability	-20°C/1 year
Synonyms	S100A16; S100F; AAG13; Protein S100-A16; Aging-associated gene 13 protein; Protein S100-F; S100 calcium-binding protein A16
Observed Band	20kD
Cell Pathway	Nucleus, nucleolus . Cytoplasm . Primarily nucleolar. A high intracellular calcium level induces nucleolar exit and nucleocytoplasmic transport, whereas a low intracellular calcium level leads to nuclear translocation and accumulation within specific region of nucleoli (PubMed:17030513).
Tissue Specificity	Ubiquitous (PubMed:14684152). Highly expressed in esophagus, adipose tissues and colon. Expressed at lower level in lung, brain, pancreas and skeletal muscle. Expression is up-regulated in tumors of bladder, lung, thyroid gland, pancreas and ovary (PubMed:14684152). Expressed in astrocytes (PubMed:17030513).
Function	similarity:Belongs to the S-100 family.,similarity:Contains 2 EF-hand domains.,
Background	similarity:Belongs to the S-100 family.,similarity:Contains 2 EF-hand domains.,

Nanjing BYabscience technology Co.,Ltd



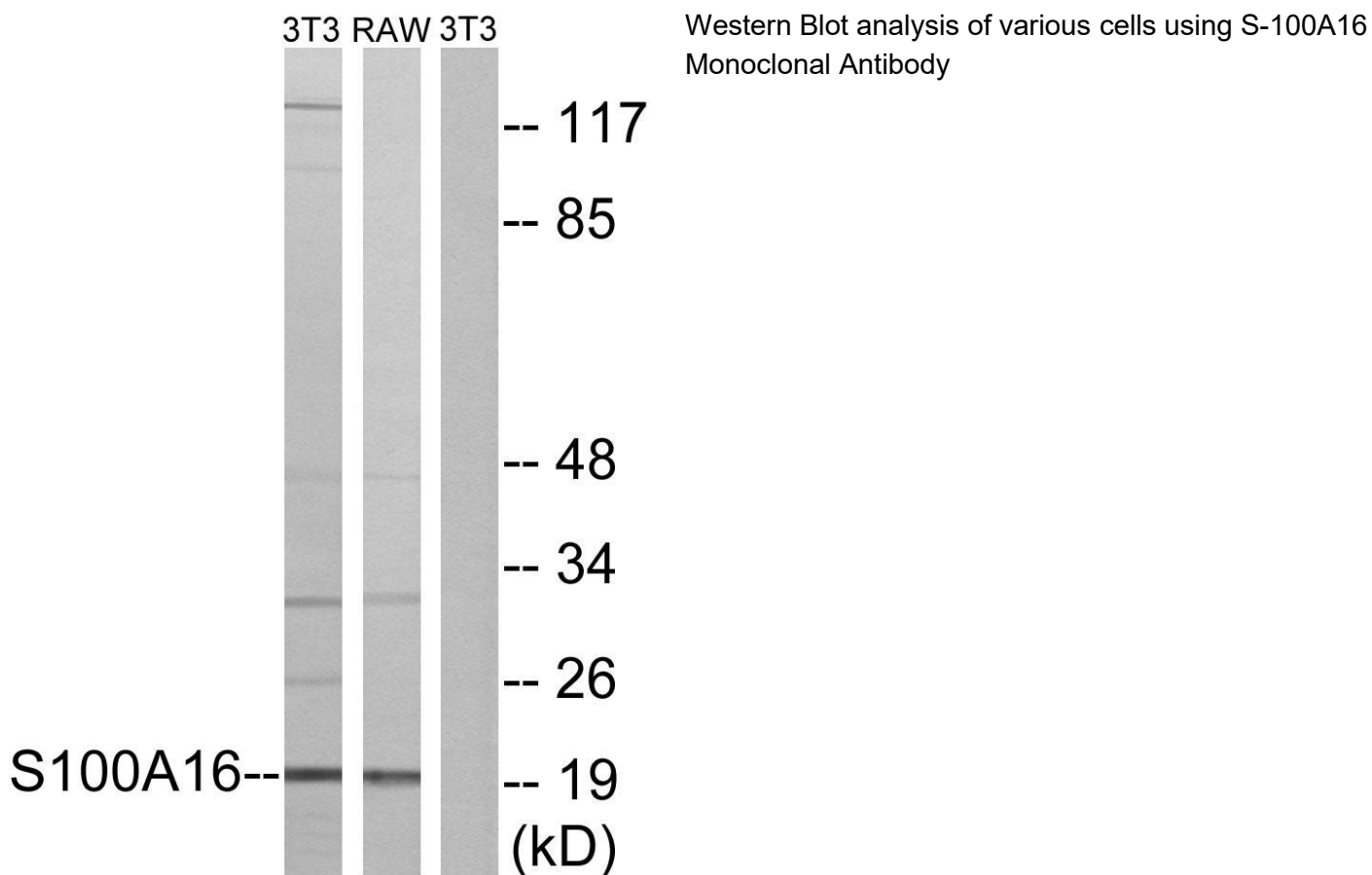
matters needing attention

Avoid repeated freezing and thawing!

Usage suggestions

This product can be used in immunological reaction related experiments. For more information, please consult technical personnel.

Products Images



Nanjing BYabs science technology Co.,Ltd

网址: www.njbybio.com

官方热线: 025-5229-8998

监督电话: 15950492658