



# PRPH Monoclonal Antibody

|                    |  |
|--------------------|--|
| Catalog No         | BYmab-03174  |
| Isotype            | IgG  |
| Reactivity         | Human;Rat  |
| Applications       | WB   |
| Gene Name          | PRPH   |
| Protein Name       | Peripherin   |
| Immunogen          | The antiserum was produced against synthesized peptide derived from human Peripherin. AA range:421-470   |
| Specificity        | PRPH Monoclonal Antibody detects endogenous levels of PRPH protein.  |
| Formulation        | Liquid in PBS containing 50% glycerol, 0.5% BSA and 0.02% sodium azide.  |
| Source             | Monoclonal, Mouse,IgG  |
| Purification       | The antibody was affinity-purified from mouse antiserum by affinity-chromatography using epitope-specific immunogen.   |
| Dilution           | WB 1:500-2000  |
| Concentration      | 1 mg/ml  |
| Purity             | ≥90%   |
| Storage Stability  | -20°C/1 year   |
| Synonyms           | PRPH; NEF4; PRPH1; Peripherin; Neurofilament 4   |
| Observed Band      | 55kD   |
| Cell Pathway       | Cytoplasm, cytoskeleton . Cell projection, axon . Perikaryon .   |
| Tissue Specificity | Expressed in the neurons of the outer hair cells in the organ of Corti and to a lesser extent in type I spiral ganglion cells.   |
| Function           | function:Class-III neuronal intermediate filament protein.,online information:Peripherin entry,similarity:Belongs to the intermediate filament family.,  |
| Background         | This gene encodes a cytoskeletal protein found in neurons of the peripheral nervous system. The encoded protein is a type III intermediate filament protein with homology to other cytoskeletal proteins such as desmin, and is a different protein that the peripherin found in photoreceptors. Mutations in this gene have been associated with susceptibility to amyotrophic lateral sclerosis. [provided by RefSeq, Jul 2008], |

Nanjing BYabscience technology Co.,Ltd

网址: [www.njbybio.com](http://www.njbybio.com)

官方热线: 025-5229-8998

监督电话: 15950492658



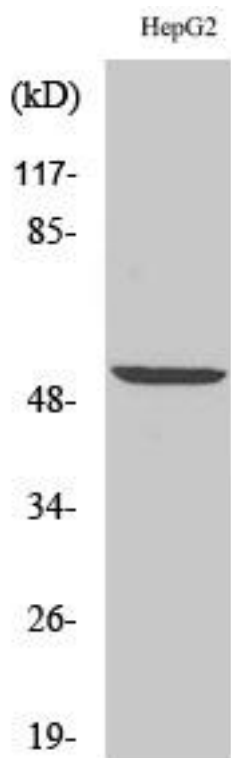
**matters needing attention**

Avoid repeated freezing and thawing!

**Usage suggestions**

This product can be used in immunological reaction related experiments. For more information, please consult technical personnel.

## Products Images



Western Blot analysis of various cells using PRPH Monoclonal Antibody