



POTE-14/22 Monoclonal Antibody

Catalog No	BYmab-03171
Isotype	IgG
Reactivity	Human;Rat;Mouse;
Applications	WB
Gene Name	POTEG/POTEH
Protein Name	POTE ankyrin domain family member G/H
Immunogen	The antiserum was produced against synthesized peptide derived from human A26C2/3. AA range:178-227
Specificity	POTE-14/22 Monoclonal Antibody detects endogenous levels of POTE-14/22 protein.
Formulation	Liquid in PBS containing 50% glycerol, 0.5% BSA and 0.02% sodium azide.
Source	Monoclonal, Mouse,IgG
Purification	The antibody was affinity-purified from mouse antiserum by affinity-chromatography using epitope-specific immunogen.
Dilution	WB 1:500-2000
Concentration	1 mg/ml
Purity	≥90%
Storage Stability	-20°C/1 year
Synonyms	POTEH; A26C3; ACTBL1; POTE22; POTE ankyrin domain family member H; ANKRD26-like family C member 3; Prostate; ovary, testis-expressed protein on chromosome 22; POTE-22; POTEG; A26C2; POTE14; POTE ankyrin domain family member G; ANKRD26-like
Observed Band	61kD
Cell Pathway	integral component of membrane,
Tissue Specificity	Prostate,
Function	similarity:Belongs to the POTE family.,similarity:Contains 7 ANK repeats.,
Background	similarity:Belongs to the POTE family.,similarity:Contains 7 ANK repeats.,

Nanjing BYabscience technology Co.,Ltd

网址: www.njbybio.com

官方热线: 025-5229-8998

监督电话: 15950492658



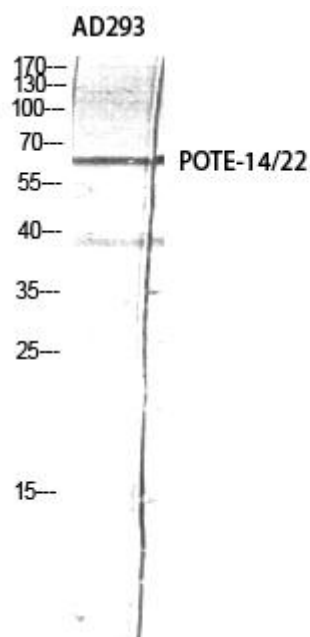
matters needing attention

Avoid repeated freezing and thawing!

Usage suggestions

This product can be used in immunological reaction related experiments. For more information, please consult technical personnel.

Products Images



Western Blot analysis of various cells using
POTE-14/22 Monoclonal Antibody