



# POTE14/22 Monoclonal Antibody

Catalog No	BYmab-03170
Isotype	IgG
Reactivity	Human;Rat;Mouse;
Applications	WB
Gene Name	POTEG
Protein Name	POTE ankyrin domain family member G
Immunogen	The antiserum was produced against synthesized peptide derived from human POTEG. AA range:401-450
Specificity	POTE14/22 Monoclonal Antibody detects endogenous levels of POTE14/22 protein.
Formulation	Liquid in PBS containing 50% glycerol, 0.5% BSA and 0.02% sodium azide.
Source	Monoclonal, Mouse,IgG
Purification	The antibody was affinity-purified from mouse antiserum by affinity-chromatography using epitope-specific immunogen.
Dilution	WB 1:500-2000
Concentration	1 mg/ml
Purity	≥90%
Storage Stability	-20°C/1 year
Synonyms	POTEG; A26C2; POTE14; POTE ankyrin domain family member G; ANKRD26-like family C member 2; Prostate; ovary, testis-expressed protein on chromosome 14; POTE-14; POTEH; A26C3; ACTBL1; POTE22; POTE ankyrin domain family member H; ANKRD26-like
Observed Band	67kD
Cell Pathway	
Tissue Specificity	Prostate,
Function	similarity:Belongs to the POTE family.,similarity:Contains 5 ANK repeats.,
Background	similarity:Belongs to the POTE family.,similarity:Contains 5 ANK repeats.,

Nanjing BYabscience technology Co.,Ltd

网址: [www.njbybio.com](http://www.njbybio.com)

官方热线: 025-5229-8998

监督电话: 15950492658



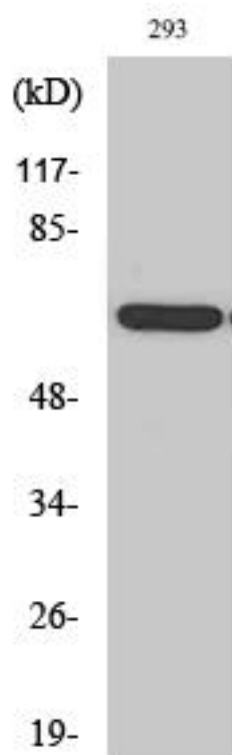
**matters needing attention**

Avoid repeated freezing and thawing!

**Usage suggestions**

This product can be used in immunological reaction related experiments. For more information, please consult technical personnel.

## Products Images



Western Blot analysis of various cells using POTE14/22 Monoclonal Antibody