



MRLC2 Monoclonal Antibody

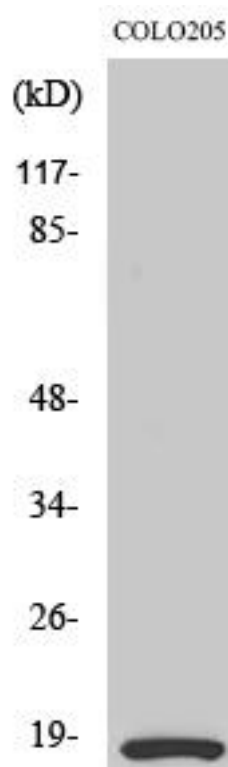
Catalog No	BYmab-03153
Isotype	IgG
Reactivity	Human;Mouse;Rat
Applications	WB
Gene Name	MLRN
Protein Name	Myosin regulatory light polypeptide 9
Immunogen	The antiserum was produced against synthesized peptide derived from human MRLC2. AA range:3-52
Specificity	MRLC2 Monoclonal Antibody detects endogenous levels of MRLC2 protein.
Formulation	Liquid in PBS containing 50% glycerol, 0.5% BSA and 0.02% sodium azide.
Source	Monoclonal, Mouse,IgG
Purification	The antibody was affinity-purified from mouse antiserum by affinity-chromatography using epitope-specific immunogen.
Dilution	WB 1:500-2000
Concentration	1 mg/ml
Purity	≥90%
Storage Stability	-20°C/1 year
Synonyms	MYL9; MLC2; MRLC1; MYRL2; Myosin regulatory light polypeptide 9; 20 kDa myosin light chain; LC20; MLC-2C; Myosin RLC; Myosin regulatory light chain 2; smooth muscle isoform; Myosin regulatory light chain 9; Myosin regulatory light chain MRL
Observed Band	18kD
Cell Pathway	Cytoplasm, cytoskeleton . Cytoplasm, cell cortex . Colocalizes with F-actin, MYH9 and PIEZO1 at the actomyosin cortex in myoblasts. .
Tissue Specificity	Smooth muscle tissues and in some, but not all, nonmuscle cells.
Function	function:Myosin regulatory subunit that plays an important role in regulation of both smooth muscle and nonmuscle cell contractile activity via its phosphorylation. Implicated in cytokinesis, receptor capping, and cell locomotion.,miscellaneous:This chain binds calcium.,PTM:Phosphorylation increases the actin-activated myosin ATPase activity and thereby regulates the contractile activity. It is required to generate the driving force in the migration of the cells but not necessary for localization of myosin-2 at the leading

Nanjing BYabscience technology Co.,Ltd



	edge.,similarity:Contains 3 EF-hand domains.,subunit:Myosin is an hexamer of 2 heavy chains and 4 light chains.,tissue specificity:Smooth muscle tissues and in some, but not all, nonmuscle cells.,
Background	Myosin, a structural component of muscle, consists of two heavy chains and four light chains. The protein encoded by this gene is a myosin light chain that may regulate muscle contraction by modulating the ATPase activity of myosin heads. The encoded protein binds calcium and is activated by myosin light chain kinase. Two transcript variants encoding different isoforms have been found for this gene. [provided by RefSeq, Jul 2008],
matters needing attention	Avoid repeated freezing and thawing!
Usage suggestions	This product can be used in immunological reaction related experiments. For more information, please consult technical personnel.

Products Images



Western Blot analysis of various cells using MRLC2 Monoclonal Antibody