



MAP-2 Monoclonal Antibody

Catalog No	BYmab-03147
Isotype	IgG
Reactivity	Human;Mouse;Rat
Applications	WB
Gene Name	MAP2
Protein Name	Microtubule-associated protein 2
Immunogen	The antiserum was produced against synthesized peptide derived from human MAP-2. AA range:14-63
Specificity	MAP-2 Monoclonal Antibody detects endogenous levels of MAP-2 protein.
Formulation	Liquid in PBS containing 50% glycerol, 0.5% BSA and 0.02% sodium azide.
Source	Monoclonal, Mouse,IgG
Purification	The antibody was affinity-purified from mouse antiserum by affinity-chromatography using epitope-specific immunogen.
Dilution	WB 1:500-2000
Concentration	1 mg/ml
Purity	≥90%
Storage Stability	-20°C/1 year
Synonyms	MAP2; Microtubule-associated protein 2; MAP-2
Observed Band	280kD
Cell Pathway	Cytoplasm, cytoskeleton . Cell projection, dendrite .
Tissue Specificity	Brain,Brain cortex,Epithelium,Pancreas,Testis,
Function	alternative products:Additional isoforms seem to exist,function:The exact function of MAP2 is unknown but MAPs may stabilize the microtubules against depolymerization. They also seem to have a stiffening effect on microtubules.,PTM:MAP2A/c is phosphorylated. Phosphorylated upon DNA damage, probably by ATM or ATR.,similarity:Contains 3 Tau/MAP repeats.,similarity:Contains 4 Tau/MAP repeats.,
Background	This gene encodes a protein that belongs to the microtubule-associated protein family. The proteins of this family are thought to be involved in microtubule assembly, which is an essential step in neurogenesis. The products of similar genes in rat and mouse are neuron-specific cytoskeletal proteins that are enriched

Nanjing BYabscience technology Co.,Ltd



in dendrites, implicating a role in determining and stabilizing dendritic shape during neuron development. A number of alternatively spliced variants encoding distinct isoforms have been described. [provided by RefSeq, Jan 2010],

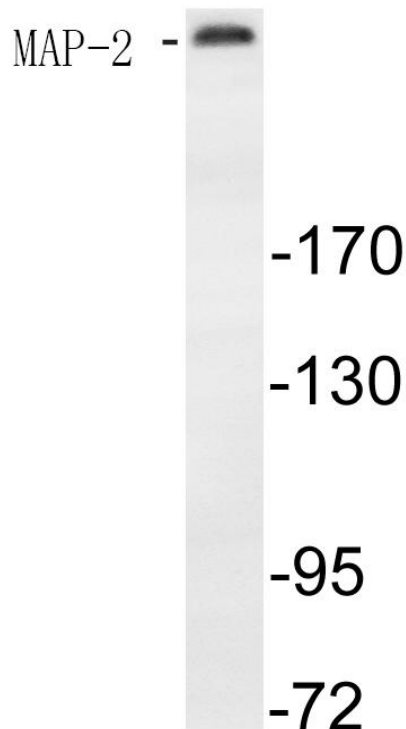
matters needing attention

Avoid repeated freezing and thawing!

Usage suggestions

This product can be used in immunological reaction related experiments. For more information, please consult technical personnel.

Products Images



Western Blot analysis of various cells using MAP-2 Monoclonal Antibody