



# Involucrin Monoclonal Antibody

Catalog No	BYmab-03141
Isotype	IgG
Reactivity	Human;Rat;Mouse;
Applications	WB
Gene Name	IVL
Protein Name	Involucrin
Immunogen	The antiserum was produced against synthesized peptide derived from human Involucrin. AA range:536-585
Specificity	Involucrin Monoclonal Antibody detects endogenous levels of Involucrin protein.
Formulation	Liquid in PBS containing 50% glycerol, 0.5% BSA and 0.02% sodium azide.
Source	Monoclonal, Mouse,IgG
Purification	The antibody was affinity-purified from mouse antiserum by affinity-chromatography using epitope-specific immunogen.
Dilution	WB 1:500-2000
Concentration	1 mg/ml
Purity	≥90%
Storage Stability	-20°C/1 year
Synonyms	IVL; Involucrin
Observed Band	68kD
Cell Pathway	Cytoplasm. Constituent of the scaffolding of the cornified envelope.
Tissue Specificity	Keratinocytes of epidermis and other stratified squamous epithelia.
Function	function:Part of the insoluble cornified cell envelope (CE) of stratified squamous epithelia.,PTM:Substrate of transglutaminase. Some glutamines and lysines are cross-linked to other involucrin molecules, to other proteins such as keratin, desmoplakin, periplakin and envoplakin, and to lipids like omega-hydroxyceramide.,similarity:Belongs to the involucrin family.,subcellular location:Constituent of the scaffolding of the cornified envelope.,subunit:Directly or indirectly cross-linked to cornifelin (CNFN).,tissue specificity:Keratinocytes of epidermis and other stratified squamous epithelia.,
Background	involucrin(IVL) Homo sapiens Involucrin, a component of the keratinocyte crosslinked envelope, is found in the cytoplasm and crosslinked to membrane

Nanjing BYabscience technology Co.,Ltd



proteins by transglutaminase. This gene is mapped to 1q21, among calpactin I light chain, trichohyalin, profillaggrin, loricrin, and calcyclin. [provided by RefSeq, Jul 2008],

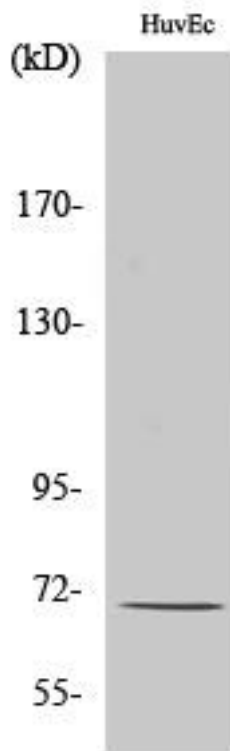
**matters needing attention**

Avoid repeated freezing and thawing!

**Usage suggestions**

This product can be used in immunological reaction related experiments. For more information, please consult technical personnel.

## Products Images



Western Blot analysis of various cells using Involucrin Monoclonal Antibody