



# CIB3 Monoclonal Antibody

Catalog No	BYmab-03100
Isotype	IgG
Reactivity	Human;Mouse
Applications	WB
Gene Name	CIB3
Protein Name	Calcium and integrin-binding family member 3
Immunogen	The antiserum was produced against synthesized peptide derived from human CIB3. AA range:138-187
Specificity	CIB3 Monoclonal Antibody detects endogenous levels of CIB3 protein.
Formulation	Liquid in PBS containing 50% glycerol, 0.5% BSA and 0.02% sodium azide.
Source	Monoclonal, Mouse,IgG
Purification	The antibody was affinity-purified from mouse antiserum by affinity-chromatography using epitope-specific immunogen.
Dilution	WB 1:500-2000
Concentration	1 mg/ml
Purity	≥90%
Storage Stability	-20°C/1 year
Synonyms	CIB3; KIP3; Calcium and integrin-binding family member 3; Kinase-interacting protein 3; KIP 3
Observed Band	32kD
Cell Pathway	
Tissue Specificity	PCR rescued clones,
Function	similarity:Contains 3 EF-hand domains.,
Background	This gene product shares a high degree of sequence similarity with DNA-dependent protein kinase catalytic subunit-interacting protein 2 in human and mouse, and like them may bind the catalytic subunit of DNA-dependent protein kinases. The exact function of this gene is not known. Alternative splicing results in multiple transcript variants. [provided by RefSeq, Jul 2014],
matters needing attention	Avoid repeated freezing and thawing!

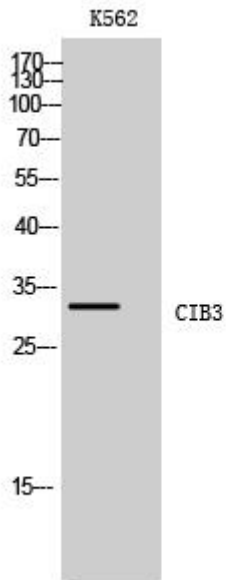
Nanjing BYabscience technology Co.,Ltd



## Usage suggestions

This product can be used in immunological reaction related experiments. For more information, please consult technical personnel.

## Products Images



Western Blot analysis of various cells using CIB3 Monoclonal Antibody

Nanjing BYabs science technology Co.,Ltd

网址: [www.njbybio.com](http://www.njbybio.com)

官方热线: 025-5229-8998

监督电话: 15950492658