



# Tensin-1 (phospho Tyr1326) Monoclonal Antibody

<b>Catalog No</b>	BYmab-03065
<b>Isotype</b>	IgG
<b>Reactivity</b>	Human;Mouse
<b>Applications</b>	WB
<b>Gene Name</b>	TNS1
<b>Protein Name</b>	Tensin-1
<b>Immunogen</b>	Synthesized phospho-peptide around the phosphorylation site of human Tensin-1 (phospho Tyr1326)
<b>Specificity</b>	Phospho-Tensin-1 (Y1326) Monoclonal Antibody detects endogenous levels of Tensin-1 protein only when phosphorylated at Y1326.
<b>Formulation</b>	Liquid in PBS containing 50% glycerol, 0.5% BSA and 0.02% sodium azide.
<b>Source</b>	Monoclonal, Mouse,IgG
<b>Purification</b>	The antibody was affinity-purified from mouse antiserum by affinity-chromatography using epitope-specific immunogen.
<b>Dilution</b>	WB 1:500-2000
<b>Concentration</b>	1 mg/ml
<b>Purity</b>	≥90%
<b>Storage Stability</b>	-20°C/1 year
<b>Synonyms</b>	TNS1; TNS; Tensin-1
<b>Observed Band</b>	185kD
<b>Cell Pathway</b>	Cell surface . Cell junction, focal adhesion . Cytoplasm, cytoskeleton . Localized at cell periphery preferentially to fibrillar adhesions than focal adhesions. Translocates from the cell edge to cell center in an ITGB1BP1-dependent manner.
<b>Tissue Specificity</b>	Ubiquitous.
<b>Function</b>	function:May be involved in cell migration, cartilage development and in linking signal transduction pathways to the cytoskeleton.;PTM:Rapidly cleaved by calpain II.;PTM:Tyrosine phosphorylated.;similarity:Contains 1 C2 tensin-type domain.;similarity:Contains 1 phosphatase tensin-type domain.;similarity:Contains 1 SH2 domain.;subunit:Binds to actin filaments and interacts with phosphotyrosine-containing proteins. Interacts with STARD8.;tissue specificity:Ubiquitous.,

**Nanjing BYabscience technology Co.,Ltd**



## Background

The protein encoded by this gene localizes to focal adhesions, regions of the plasma membrane where the cell attaches to the extracellular matrix. This protein crosslinks actin filaments and contains a Src homology 2 (SH2) domain, which is often found in molecules involved in signal transduction. This protein is a substrate of calpain II. Alternative splicing results in multiple transcript variants encoding different isoforms. [provided by RefSeq, Apr 2015],

## matters needing attention

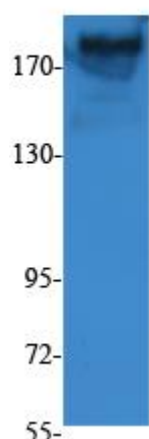
Avoid repeated freezing and thawing!

## Usage suggestions

This product can be used in immunological reaction related experiments. For more information, please consult technical personnel.

## Products Images

(kD)



Tensin-1 (p-Tyr1326)

Western Blot analysis of various cells using Tensin-1 (phospho Tyr1326) Monoclonal Antibody

**Nanjing BYabscience technology Co.,Ltd**

网址: [www.njbybio.com](http://www.njbybio.com)

官方热线: 025-5229-8998

监督电话: 15950492658