



Cytokeratin 18 (phospho Ser33) Monoclonal Antibody

Catalog No	BYmab-03050
Isotype	IgG
Reactivity	Human;Mouse;Rat
Applications	WB
Gene Name	KRT18
Protein Name	Keratin type I cytoskeletal 18
Immunogen	The antiserum was produced against synthesized peptide derived from human Keratin 18 around the phosphorylation site of Ser33. AA range:1-50
Specificity	Phospho-Cytokeratin 18 (S33) Monoclonal Antibody detects endogenous levels of Cytokeratin 18 protein only when phosphorylated at S33.
Formulation	Liquid in PBS containing 50% glycerol, 0.5% BSA and 0.02% sodium azide.
Source	Monoclonal, Mouse,IgG
Purification	The antibody was affinity-purified from mouse antiserum by affinity-chromatography using epitope-specific immunogen.
Dilution	WB 1:500-2000
Concentration	1 mg/ml
Purity	≥90%
Storage Stability	-20°C/1 year
Synonyms	KRT18; CYK18; PIG46; Keratin; type I cytoskeletal 18; Cell proliferation-inducing gene 46 protein; Cytokeratin-18; CK-18; Keratin-18; K18
Observed Band	47kD
Cell Pathway	Cytoplasm, perinuclear region. Nucleus, nucleolus.
Tissue Specificity	Expressed in colon, placenta, liver and very weakly in exocervix. Increased expression observed in lymph nodes of breast carcinoma.
Function	disease:Defects in KRT18 are a cause of cryptogenic cirrhosis [MIM:215600].,function:Involved in the uptake of thrombin-antithrombin complexes by hepatic cells (By similarity). When phosphorylated, plays a role in filament reorganization. Involved in the delivery of mutated CFTR to the plasma membrane. Together with KRT8, is involved in interleukin-6 (IL-6)-mediated barrier protection.,induction:By IL-6.,miscellaneous:There are two types of cytoskeletal and microfibrillar keratin: I (acidic; 40-55 kDa) and II (neutral to basic; 56-70 kDa).,PTM:O-glycosylated at multiple sites; glycans consist of single N-acetylglucosamine residues.,PTM:Phosphorylation at Ser-34 increases during mitosis. Hyperphosphorylated at Ser-53 in diseased cirrhosis liver.

Nanjing BYabscience technology Co.,Ltd



Phosphorylation increases by IL-6.,PTM:Proteolytically cleaved by caspases during epithelial cell apoptosis. Cleavage occurs at Asp-238 by either

Background

KRT18 encodes the type I intermediate filament chain keratin 18. Keratin 18, together with its filament partner keratin 8, are perhaps the most commonly found members of the intermediate filament gene family. They are expressed in single layer epithelial tissues of the body. Mutations in this gene have been linked to cryptogenic cirrhosis. Two transcript variants encoding the same protein have been found for this gene. [provided by RefSeq, Jul 2008],

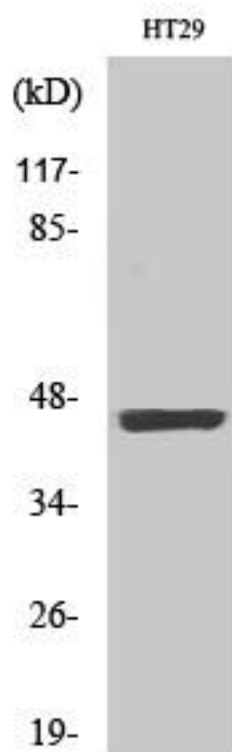
matters needing attention

Avoid repeated freezing and thawing!

Usage suggestions

This product can be used in immunological reaction related experiments. For more information, please consult technical personnel.

Products Images



Western Blot analysis of various cells using Cytokeratin 18 (phospho Ser33) Monoclonal Antibody