



MeCP2 Monoclonal Antibody

| | |
|---------------------------|--|
| Catalog No | BYmab-03006 |
| Isotype | IgG |
| Reactivity | Human |
| Applications | WB |
| Gene Name | MECP2 |
| Protein Name | Methyl-CpG-binding protein 2 |
| Immunogen | Synthetic Peptide of MeCP2 AA range: 313-363 |
| Specificity | The antibody detects endogenous MeCP2 proteins. |
| Formulation | PBS, pH 7.4, containing 0.5%BSA, 0.02% sodium azide as Preservative and 50% Glycerol. |
| Source | Monoclonal, Mouse,IgG |
| Purification | The antibody was affinity-purified from mouse antiserum by affinity-chromatography using epitope-specific immunogen. |
| Dilution | WB 1:500-2000 |
| Concentration | 1 mg/ml |
| Purity | ≥90% |
| Storage Stability | -20°C/1 year |
| Synonyms | Methyl-CpG-binding protein 2 (MeCp-2 protein) (MeCp2) |
| Observed Band | 53kD |
| Cell Pathway | Nucleus . Colocalized with methyl-CpG in the genome. Colocalized with TBL1X to the heterochromatin foci. . |
| Tissue Specificity | Present in all adult somatic tissues tested. |
| Function | disease:A chromosomal duplication involving MECP2 is the cause of mental retardation syndromic X-linked Lubs type (MRXSL) [MIM:300260]. Increased dosage of MECP2 appears to be responsible for the mental retardation phenotype. The main features present in affected males are severe to profound mental retardation with onset at birth, axial and facial hypotonia, progressive spasticity predominantly at the lower limbs, seizures and recurrent infections.,disease:Defects in MECP2 are the cause of mental retardation syndromic X-linked type 13 (MRXS13) [MIM:300055]. Mental retardation is a mental disorder characterized by significantly sub-average general intellectual functioning associated with impairments in adaptive behavior and manifested during the developmental period. MRXS13 patients manifest mental retardation |

Nanjing BYabscience technology Co.,Ltd



associated with other variable features such as spasticity, episodes of manic

Background

DNA methylation is the major modification of eukaryotic genomes and plays an essential role in mammalian development. Human proteins MECP2, MBD1, MBD2, MBD3, and MBD4 comprise a family of nuclear proteins related by the presence in each of a methyl-CpG binding domain (MBD). Each of these proteins, with the exception of MBD3, is capable of binding specifically to methylated DNA. MECP2, MBD1 and MBD2 can also repress transcription from methylated gene promoters. In contrast to other MBD family members, MECP2 is X-linked and subject to X inactivation. MECP2 is dispensable in stem cells, but is essential for embryonic development. MECP2 gene mutations are the cause of most cases of Rett syndrome, a progressive neurologic developmental disorder and one of the most common causes of mental retardation in females. Alternative splicing results in multiple transcript variants encoding different isoforms.

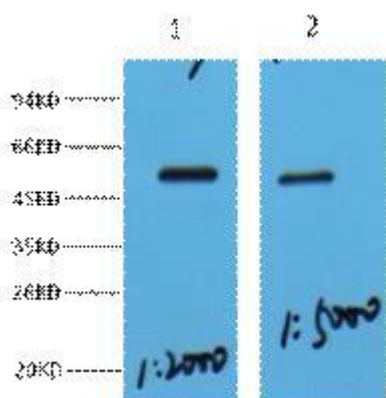
matters needing attention

Avoid repeated freezing and thawing!

Usage suggestions

This product can be used in immunological reaction related experiments. For more information, please consult technical personnel.

Products Images



Western Blot analysis of various cells using MeCP2 Monoclonal Antibody

Nanjing BYabscience technology Co.,Ltd