



# ACSS1 Monoclonal Antibody

Catalog No	BYmab-02892
Isotype	IgG
Reactivity	Human;Mouse;Rat
Applications	WB
Gene Name	ACSS1 ACAS2L KIAA1846
Protein Name	acyl-CoA synthetase short-chain family member 1
Immunogen	Synthetic peptide from human protein at AA range: 620-689
Specificity	The antibody detects endogenous ACSS1 protein
Formulation	Liquid in PBS containing 50% glycerol, 0.5% BSA and 0.02% sodium azide.
Source	Monoclonal, Mouse,IgG
Purification	The antibody was affinity-purified from mouse antiserum by affinity-chromatography using epitope-specific immunogen.
Dilution	WB 1:500-2000
Concentration	1 mg/ml
Purity	≥90%
Storage Stability	-20°C/1 year
Synonyms	ACSS1 ACAS2L KIAA1846
Observed Band	75kD
Cell Pathway	Mitochondrion matrix .
Tissue Specificity	Amygdala,Brain,PCR rescued clones,Placenta,Spleen,Stomach,T
Function	catalytic activity:ATP + acetate + CoA = AMP + diphosphate + acetyl-CoA.,function:Converts acetate to acetyl-CoA so that it can be used for oxidation through the tricarboxylic cycle to produce ATP and CO(2).,sequence caution:Sequencing errors.,similarity:Belongs to the ATP-dependent AMP-binding enzyme family.,
Background	This gene encodes a mitochondrial acetyl-CoA synthetase enzyme. A similar protein in mice plays an important role in the tricarboxylic acid cycle by catalyzing the conversion of acetate to acetyl CoA. Alternatively spliced transcript variants encoding multiple isoforms have been observed for this gene. [provided by RefSeq, Nov 2011],

Nanjing BYabscience technology Co.,Ltd



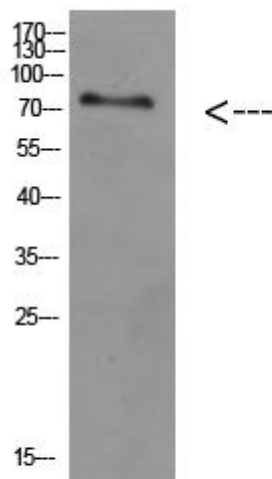
**matters needing attention**

Avoid repeated freezing and thawing!

**Usage suggestions**

This product can be used in immunological reaction related experiments. For more information, please consult technical personnel.

## Products Images



Western Blot analysis of various cells using ACSS1 Monoclonal Antibody