



ASAH3L Monoclonal Antibody

Catalog No	BYmab-02887
Isotype	IgG
Reactivity	Human;Mouse;Monkey
Applications	WB
Gene Name	ACER2
Protein Name	Alkaline ceramidase 2
Immunogen	Synthesized peptide derived from ASAH3L . at AA range: 50-130
Specificity	ASAH3L Monoclonal Antibody detects endogenous levels of ASAH3L protein.
Formulation	Liquid in PBS containing 50% glycerol, 0.5% BSA and 0.02% sodium azide.
Source	Monoclonal, Mouse,IgG
Purification	The antibody was affinity-purified from mouse antiserum by affinity-chromatography using epitope-specific immunogen.
Dilution	WB 1:500-2000
Concentration	1 mg/ml
Purity	≥90%
Storage Stability	-20°C/1 year
Synonyms	ACER2; ASAH3L; PP11646; Alkaline ceramidase 2; AlkCDase 2; Alkaline CDase 2; haCER2; Acylsphingosine deacylase 3-like; N-acylsphingosine amidohydrolase 3-like
Observed Band	33kD
Cell Pathway	Golgi apparatus membrane ; Multi-pass membrane protein .
Tissue Specificity	Highly expressed in placenta.
Function	catalytic activity:N-acylsphingosine + H(2)O = a carboxylate + sphingosine.,function:Hydrolyzes the sphingolipid ceramide into sphingosine and free fatty acid.,similarity:Belongs to the alkaline ceramidase family.,
Background	The sphingolipid metabolite sphingosine-1-phosphate promotes cell proliferation and survival, whereas its precursor, sphingosine, has the opposite effect. The ceramidase ACER2 hydrolyzes very long chain ceramides to generate sphingosine (Xu et al., 2006 [PubMed 16940153]).[supplied by OMIM, Jul 2010],

Nanjing BYabscience technology Co.,Ltd



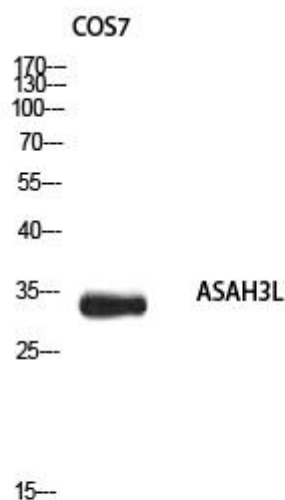
matters needing attention

Avoid repeated freezing and thawing!

Usage suggestions

This product can be used in immunological reaction related experiments. For more information, please consult technical personnel.

Products Images



Western Blot analysis of various cells using ASAH3L Monoclonal Antibody