



# Aldolase C Monoclonal Antibody

<b>Catalog No</b>	BYmab-02860
<b>Isotype</b>	IgG
<b>Reactivity</b>	Human;Mouse;Rat
<b>Applications</b>	WB
<b>Gene Name</b>	ALDOC
<b>Protein Name</b>	Fructose-bisphosphate aldolase C
<b>Immunogen</b>	The antiserum was produced against synthesized peptide derived from the N-terminal region of human ALDOC. AA range:21-70
<b>Specificity</b>	Aldolase C Monoclonal Antibody detects endogenous levels of Aldolase C protein.
<b>Formulation</b>	Liquid in PBS containing 50% glycerol, 0.5% BSA and 0.02% sodium azide.
<b>Source</b>	Monoclonal, Mouse,IgG
<b>Purification</b>	The antibody was affinity-purified from mouse antiserum by affinity-chromatography using epitope-specific immunogen.
<b>Dilution</b>	WB 1:500-2000
<b>Concentration</b>	1 mg/ml
<b>Purity</b>	≥90%
<b>Storage Stability</b>	-20°C/1 year
<b>Synonyms</b>	ALDOC; ALDC; Fructose-bisphosphate aldolase C; Brain-type aldolase
<b>Observed Band</b>	39kD
<b>Cell Pathway</b>	mitochondrion,cytosol,cytoskeleton,extracellular exosome,
<b>Tissue Specificity</b>	Brain,Colon,Epithelium,Eye,Uterus,
<b>Function</b>	catalytic activity:D-fructose 1,6-bisphosphate = glycerone phosphate + D-glyceraldehyde 3-phosphate.,miscellaneous:In vertebrates, three forms of this ubiquitous glycolytic enzyme are found, aldolase A in muscle, aldolase B in liver and aldolase C in brain.,pathway:Carbohydrate degradation; glycolysis; D-glyceraldehyde 3-phosphate and glycerone phosphate from D-glucose: step 4/4.,similarity:Belongs to the class I fructose-bisphosphate aldolase family.,subunit:Homotetramer.,
<b>Background</b>	This gene encodes a member of the class I fructose-biphosphate aldolase gene family. Expressed specifically in the hippocampus and Purkinje cells of the brain, the encoded protein is a glycolytic enzyme that catalyzes the reversible aldol

**Nanjing BYabscience technology Co.,Ltd**



cleavage of fructose-1,6-biphosphate and fructose 1-phosphate to dihydroxyacetone phosphate and either glyceraldehyde-3-phosphate or glyceraldehyde, respectively. [provided by RefSeq, Jul 2008],

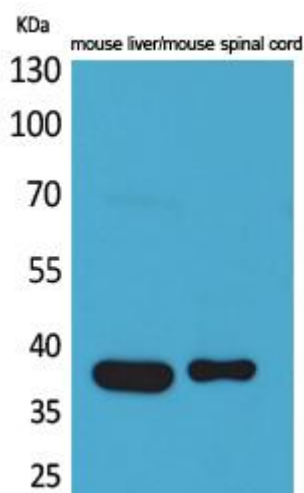
**matters needing attention**

Avoid repeated freezing and thawing!

**Usage suggestions**

This product can be used in immunological reaction related experiments. For more information, please consult technical personnel.

## Products Images



Western Blot analysis of various cells using Aldolase C Monoclonal Antibody

**Nanjing BYabs science technology Co.,Ltd**

网址: [www.njbybio.com](http://www.njbybio.com)

官方热线: 025-5229-8998

监督电话: 15950492658