



# ALDH1A1 Monoclonal Antibody

Catalog No	BYmab-02857
Isotype	IgG
Reactivity	Human;Rat;Mouse;
Applications	WB
Gene Name	ALDH1A1
Protein Name	Retinal dehydrogenase 1
Immunogen	The antiserum was produced against synthesized peptide derived from the N-terminal region of human ALDH1A1. AA range:21-70
Specificity	ALDH1A1 Monoclonal Antibody detects endogenous levels of ALDH1A1 protein.
Formulation	Liquid in PBS containing 50% glycerol, 0.5% BSA and 0.02% sodium azide.
Source	Monoclonal, Mouse,IgG
Purification	The antibody was affinity-purified from mouse antiserum by affinity-chromatography using epitope-specific immunogen.
Dilution	WB 1:500-2000
Concentration	1 mg/ml
Purity	≥90%
Storage Stability	-20°C/1 year
Synonyms	ALDH1A1; ALDC; ALDH1; PUMB1; Retinal dehydrogenase 1; RALDH 1; RaIDH1; ALDH-E1; ALHDII; Aldehyde dehydrogenase family 1 member A1; Aldehyde dehydrogenase, cytosolic
Observed Band	55kD
Cell Pathway	Cytoplasm, cytosol . Cell projection, axon .
Tissue Specificity	Expressed by erythrocytes (at protein level).
Function	catalytic activity:Retinal + NAD(+) + H(2)O = retinoate + NADH.,function:Binds free retinal and cellular retinol-binding protein-bound retinal. Can convert/oxidize retinaldehyde to retinoic acid.,pathway:Cofactor metabolism; retinol metabolism.,similarity:Belongs to the aldehyde dehydrogenase family.,subunit:Homotetramer.,
Background	The protein encoded by this gene belongs to the aldehyde dehydrogenase family. Aldehyde dehydrogenase is the next enzyme after alcohol dehydrogenase in the major pathway of alcohol metabolism. There are two major aldehyde

Nanjing BYabscience technology Co.,Ltd



dehydrogenase isozymes in the liver, cytosolic and mitochondrial, which are encoded by distinct genes, and can be distinguished by their electrophoretic mobility, kinetic properties, and subcellular localization. This gene encodes the cytosolic isozyme. Studies in mice show that through its role in retinol metabolism, this gene may also be involved in the regulation of the metabolic responses to high-fat diet. [provided by RefSeq, Mar 2011],

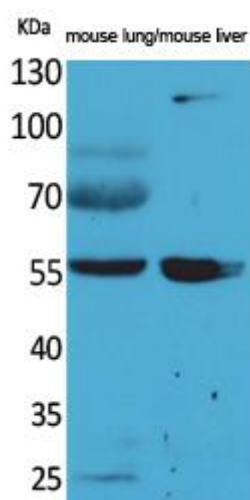
**matters needing attention**

Avoid repeated freezing and thawing!

**Usage suggestions**

This product can be used in immunological reaction related experiments. For more information, please consult technical personnel.

## Products Images



Western Blot analysis of various cells using ALDH1A1 Monoclonal Antibody