



USP44 Monoclonal Antibody

Catalog No	BYmab-02839
Isotype	IgG
Reactivity	Human;Rat;Mouse;
Applications	WB
Gene Name	USP44
Protein Name	Ubiquitin carboxyl-terminal hydrolase 44
Immunogen	The antiserum was produced against synthesized peptide derived from human USP44. AA range:211-260
Specificity	USP44 Monoclonal Antibody detects endogenous levels of USP44 protein.
Formulation	Liquid in PBS containing 50% glycerol, 0.5% BSA and 0.02% sodium azide.
Source	Monoclonal, Mouse,IgG
Purification	The antibody was affinity-purified from mouse antiserum by affinity-chromatography using epitope-specific immunogen.
Dilution	WB 1:500-2000
Concentration	1 mg/ml
Purity	≥90%
Storage Stability	-20°C/1 year
Synonyms	USP44; Ubiquitin carboxyl-terminal hydrolase 44; Deubiquitinating enzyme 44; Ubiquitin thioesterase 44; Ubiquitin-specific-processing protease 44
Observed Band	81kD
Cell Pathway	Nucleus . Peaks in interphase, with relatively low levels maintained throughout mitosis. .
Tissue Specificity	Expressed in testis. Expressed at high levels in T-cell acute lymphoblastic leukemia.
Function	catalytic activity:Ubiquitin C-terminal thioester + H(2)O = ubiquitin + a thiol.,similarity:Belongs to the peptidase C19 family.,similarity:Contains 1 UBP-type zinc finger.,tissue specificity:Expressed in testis.,
Background	Modification of cellular proteins by ubiquitin is an essential regulatory mechanism controlled by the coordinated action of multiple ubiquitin-conjugating and deubiquitinating enzymes. USP44 belongs to a large family of cysteine proteases that function as deubiquitinating enzymes (Quesada et al., 2004 [PubMed 14715245]).[supplied by OMIM, Mar 2008],

Nanjing BYabscience technology Co.,Ltd



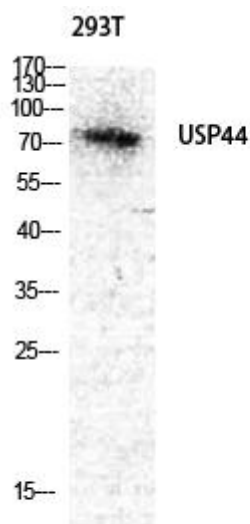
matters needing attention

Avoid repeated freezing and thawing!

Usage suggestions

This product can be used in immunological reaction related experiments. For more information, please consult technical personnel.

Products Images



Western Blot analysis of various cells using USP44 Monoclonal Antibody