



# USP30 Monoclonal Antibody

<b>Catalog No</b>	BYmab-02832
<b>Isotype</b>	IgG
<b>Reactivity</b>	Human;Mouse;Rat
<b>Applications</b>	WB
<b>Gene Name</b>	USP30
<b>Protein Name</b>	Ubiquitin carboxyl-terminal hydrolase 30
<b>Immunogen</b>	The antiserum was produced against synthesized peptide derived from human USP30. AA range:31-80
<b>Specificity</b>	USP30 Monoclonal Antibody detects endogenous levels of USP30 protein.
<b>Formulation</b>	Liquid in PBS containing 50% glycerol, 0.5% BSA and 0.02% sodium azide.
<b>Source</b>	Monoclonal, Mouse,IgG
<b>Purification</b>	The antibody was affinity-purified from mouse antiserum by affinity-chromatography using epitope-specific immunogen.
<b>Dilution</b>	WB 1:500-2000
<b>Concentration</b>	1 mg/ml
<b>Purity</b>	≥90%
<b>Storage Stability</b>	-20°C/1 year
<b>Synonyms</b>	USP30; Ubiquitin carboxyl-terminal hydrolase 30; Deubiquitinating enzyme 30; Ubiquitin thioesterase 30; Ubiquitin-specific-processing protease 30; Ub-specific protease 30
<b>Observed Band</b>	60kd    unspecial bands( 65kd    105kd    130kd)in Hela and HCT116 cell.
<b>Cell Pathway</b>	Mitochondrion outer membrane .
<b>Tissue Specificity</b>	Expressed in skeletal muscle, pancreas, liver and kidney.
<b>Function</b>	catalytic activity:Ubiquitin C-terminal thioester + H(2)O = ubiquitin + a thiol.,function:May participate in the maintenance of mitochondrial morphology.,similarity:Belongs to the peptidase C19 family.,tissue specificity:Expressed in skeletal muscle, pancreas, liver and kidney.,
<b>Background</b>	USP30, a member of the ubiquitin-specific protease family (see USP1, MIM 603478), is a novel mitochondrial deubiquitinating (DUB) enzyme (Nakamura and Hirose, 2008 [PubMed 18287522]).[supplied by OMIM, Dec 2008],

**Nanjing BYabscience technology Co.,Ltd**



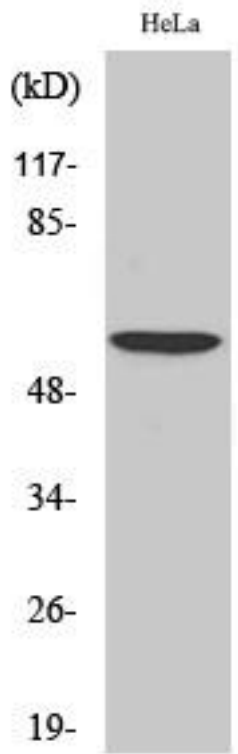
**matters needing attention**

Avoid repeated freezing and thawing!

**Usage suggestions**

This product can be used in immunological reaction related experiments. For more information, please consult technical personnel.

## Products Images



Western Blot analysis of various cells using USP30 Monoclonal Antibody