



# SENP7 Monoclonal Antibody

<b>Catalog No</b>	BYmab-02783
<b>Isotype</b>	IgG
<b>Reactivity</b>	Human;Mouse
<b>Applications</b>	WB
<b>Gene Name</b>	SENP7
<b>Protein Name</b>	Sentrin-specific protease 7
<b>Immunogen</b>	The antiserum was produced against synthesized peptide derived from human SENP7. AA range:991-1040
<b>Specificity</b>	SENP7 Monoclonal Antibody detects endogenous levels of SENP7 protein.
<b>Formulation</b>	Liquid in PBS containing 50% glycerol, 0.5% BSA and 0.02% sodium azide.
<b>Source</b>	Monoclonal, Mouse,IgG
<b>Purification</b>	The antibody was affinity-purified from mouse antiserum by affinity-chromatography using epitope-specific immunogen.
<b>Dilution</b>	WB 1:500-2000
<b>Concentration</b>	1 mg/ml
<b>Purity</b>	≥90%
<b>Storage Stability</b>	-20°C/1 year
<b>Synonyms</b>	SENP7; KIAA1707; SSP2; SUSP2; Sentrin-specific protease 7; SUMO-1-specific protease 2; Sentrin/SUMO-specific protease SENP7
<b>Observed Band</b>	112kD
<b>Cell Pathway</b>	Cytoplasm .
<b>Tissue Specificity</b>	Brain,Epithelium,Fetal kidney,Placenta,
<b>Function</b>	alternative products:Experimental confirmation may be lacking for some isoforms,caution:The sequence shown here is derived from an Ensembl automatic analysis pipeline and should be considered as preliminary data.,function:Protease that deconjugates SUMO2 and SUMO3 from targeted proteins, but not SUMO1. Catalyzes the deconjugation of poly-SUMO2 and poly-SUMO3 chains. Has very low efficiency in processing full-length SUMO proteins to their mature forms.,similarity:Belongs to the peptidase C48 family.,
<b>Background</b>	The reversible posttranslational modification of proteins by the addition of small ubiquitin-like SUMO proteins (see SUMO1; MIM 601912) is required for many cellular processes. SUMO-specific proteases, such as SENP7, process SUMO

**Nanjing BYabscience technology Co.,Ltd**



precursors to generate a C-terminal diglycine motif required for the conjugation reaction. They also display isopeptidase activity for deconjugation of SUMO-conjugated substrates (Lima and Reverter, 2008 [PubMed 18799455]).[supplied by OMIM, Jun 2009],

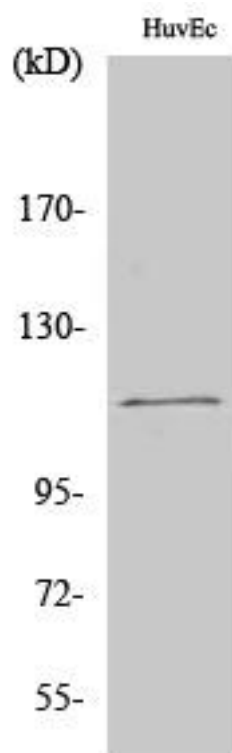
**matters needing attention**

Avoid repeated freezing and thawing!

**Usage suggestions**

This product can be used in immunological reaction related experiments. For more information, please consult technical personnel.

## Products Images



Western Blot analysis of various cells using SENP7 Monoclonal Antibody